

Product Name: SC35 Rabbit Monoclonal Antibody**Catalog #: AMRe87432**

For research use only.

Summary

Description	Recombinant rabbit monoclonal antibody
Host	Rabbit
Application	WB,IHC,ICC/IF,FC,IP
Reactivity	Human
Conjugation	Unconjugated
Modification	Unmodified
Isotype	IgG
Clonality	Monoclonal
Form	Liquid
Concentration	
Storage	Aliquot and store at -20°C (valid for 12 months). Avoid freeze/thaw cycles.
Shipping	Ice bags
Buffer	Supplied in 50mM Tris-Glycine(pH 7.4), 0.15M NaCl, 40% Glycerol, 0.01% sodium azide and 0.05% protective protein. Stable for 12 months from date of receipt.
Purification	Affinity Purification

Application

Dilution Ratio	WB 1:500-1:2000,IHC 1:200-1:1000,ICC/IF 1:100-1:200,FC 1:200-1:500,IP 1:20-1:50
Molecular Weight	Calculated MW:26 kDa; Observed MW:35 kDa

Antigen Information

Gene Name	SC35
Alternative Names	SC35; PR264; SC-35; SFRS2; SFRS2A; SRp30b
Gene ID	6427
SwissProt ID	Q01130
Immunogen	A synthetic peptide of human SC35

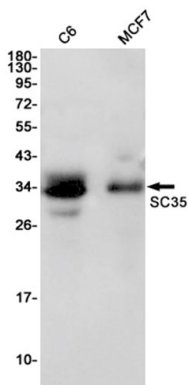
Background

The protein encoded by this gene is a member of the serine/arginine (SR)-rich family of pre-mRNA splicing factors, which constitute part of the spliceosome. Each of these factors contains an RNA recognition motif (RRM) for binding RNA and an RS

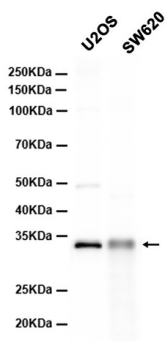
domain for binding other proteins. The RS domain is rich in serine and arginine residues and facilitates interaction between different SR splicing factors. In addition to being critical for mRNA splicing, the SR proteins have also been shown to be involved in mRNA export from the nucleus and in translation. Two transcript variants encoding the same protein and one non-coding transcript variant have been found for this gene. In addition, a pseudogene of this gene has been found on chromosome 11. [provided by RefSeq, Sep 2010]

Research Area

Image Data



Western blot detection of SC35 in C6,MCF7 cell lysates using SC35 antibody(1:1000 diluted).



Western blot analysis of extracts from U2OS,SW620 cells using AMRe87432 at 1:1000.