
Product Name: Mitochondrial ribosomal protein L11 Rabbit Monoclonal Antibody**Catalog #: AMRe87430**

For research use only.

Summary

Description	Recombinant rabbit monoclonal antibody
Host	Rabbit
Application	WB,IHC,ICC/IF,FC
Reactivity	Human
Conjugation	Unconjugated
Modification	Unmodified
Isotype	IgG
Clonality	Monoclonal
Form	Liquid
Concentration	
Storage	Aliquot and store at -20°C (valid for 12 months). Avoid freeze/thaw cycles.
Shipping	Ice bags
Buffer	Supplied in 50mM Tris-Glycine(pH 7.4), 0.15M NaCl, 40% Glycerol, 0.01% sodium azide and 0.05% protective protein. Stable for 12 months from date of receipt.
Purification	Affinity Purification

Application

Dilution Ratio	WB 1:1000-1:5000,IHC 1:200-1:500,ICC/IF 1:100-1:200,FC 1:100-1:1000
Molecular Weight	Calculated MW:21 kDa; Observed MW:21 kDa

Antigen Information

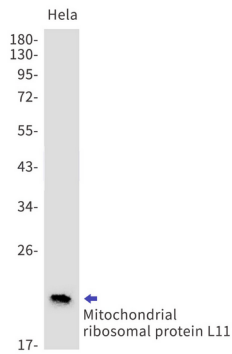
Gene Name	Mitochondrial ribosomal protein L11
Alternative Names	L11MT; CGI-113; MRP-L11
Gene ID	65003
SwissProt ID	Q9Y3B7
Immunogen	A synthetic peptide of human Mitochondrial ribosomal protein L11

Background

This nuclear gene encodes a 39S subunit component of the mitochondrial ribosome. Alternative splicing results in multiple transcript variants. Pseudogenes for this gene are found on chromosomes 5 and 12. [provided by RefSeq, May 2014]

Research Area

Image Data



Western blot detection of Mitochondrial ribosomal protein L11 in HeLa cell lysates using Mitochondrial ribosomal protein L11 antibody(1:1000 diluted).