

---

**Product Name: Connexin 43/GJA1 Rabbit Monoclonal Antibody****Catalog #: AMRe87427**

For research use only.

**Summary**

<b>Description</b>	Recombinant rabbit monoclonal antibody
<b>Host</b>	Rabbit
<b>Application</b>	WB,IHC,IP
<b>Reactivity</b>	Human, Mouse, Rat
<b>Conjugation</b>	Unconjugated
<b>Modification</b>	Unmodified
<b>Isotype</b>	IgG
<b>Clonality</b>	Monoclonal
<b>Form</b>	Liquid
<b>Concentration</b>	
<b>Storage</b>	Aliquot and store at -20°C (valid for 12 months). Avoid freeze/thaw cycles.
<b>Shipping</b>	Ice bags
<b>Buffer</b>	Supplied in 50mM Tris-Glycine(pH 7.4), 0.15M NaCl, 40% Glycerol, 0.01% sodium azide and 0.05% protective protein. Stable for 12 months from date of receipt.
<b>Purification</b>	Affinity Purification

**Application**

<b>Dilution Ratio</b>	WB 1:500-1:2000,IHC 1:50-1:200,IP 1:20-1:50
<b>Molecular Weight</b>	Calculated MW:43 kDa; Observed MW:43 kDa

**Antigen Information**

<b>Gene Name</b>	Connexin 43/GJA1
<b>Alternative Names</b>	HSS; CMDR; CX43; EKVP; GJAL; ODDD; AVSD3; EKVP3; HLHS1; PPKCA
<b>Gene ID</b>	2697
<b>SwissProt ID</b>	P17302
<b>Immunogen</b>	Recombinant protein of human Connexin 43/GJA1

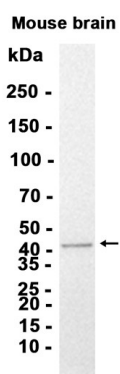
**Background**

This gene is a member of the connexin gene family. The encoded protein is a component of gap junctions, which are composed of arrays of intercellular channels that provide a route for the diffusion of low molecular weight materials from cell to cell. The

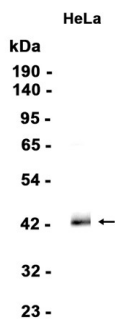
encoded protein is the major protein of gap junctions in the heart that are thought to have a crucial role in the synchronized contraction of the heart and in embryonic development. A related intronless pseudogene has been mapped to chromosome 5. Mutations in this gene have been associated with oculodentodigital dysplasia, autosomal recessive craniometaphyseal dysplasia and heart malformations. [provided by RefSeq, May 2014]

## Research Area

## Image Data



Western blot analysis of extracts from Mouse brain tissue using Connexin 43/GJA1 Rabbit Monoclonal Antibody at 1:1000.



Western blot analysis of extracts from HeLa cells using AMRe87427 at 1:1000.