

## Summary

<b>Production Name</b>	PRPF31 Rabbit Monoclonal Antibody
<b>Description</b>	Rabbit Monoclonal antibody
<b>Host</b>	Rabbit
<b>Application</b>	WB, ICC/IF, FC
<b>Reactivity</b>	Human,Mouse,Rat

## Performance

<b>Conjugation</b>	Unconjugated
<b>Modification</b>	Unmodified
<b>Isotype</b>	IgG
<b>Clonality</b>	Monoclonal
<b>Form</b>	Liquid
<b>Storage</b>	Store at 4°C short term. Aliquot and store at -20°C long term. Avoid freeze/thaw cycles.
<b>Buffer</b>	Supplied in 50mM Tris-Glycine(pH 7.4), 0.15M NaCl, 40% Glycerol, 0.01% sodium azide and 0.05% BSA. Stable for 12 months from date of receipt.
<b>Purification</b>	Affinity Purification

## Immunogen

<b>Gene Name</b>	PRPF31
<b>Alternative Names</b>	RP11; PRP31; SNRNP61; NY-BR-99
<b>Gene ID</b>	26121
<b>SwissProt ID</b>	Q8WWY3.

## Application

<b>Dilution Ratio</b>	WB: 1:1000-1:5000 ICC/IF: 1:100-1:200 FC: 1:100-1:200
<b>Molecular Weight</b>	Calculated MW:56 kDa; Observed MW:56 kDa

## Background

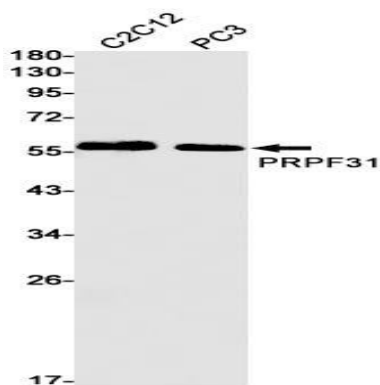
**Product Name: PRPF31 Rabbit Monoclonal Antibody**  
**Catalog #: AMRe87398**



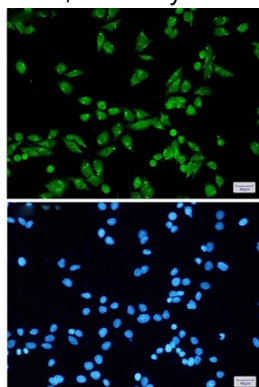
This gene encodes a component of the spliceosome complex and is one of several retinitis pigmentosa-causing genes. When the gene product is added to the spliceosome complex, activation occurs.[provided by RefSeq, Jan 2009]

## Research Area

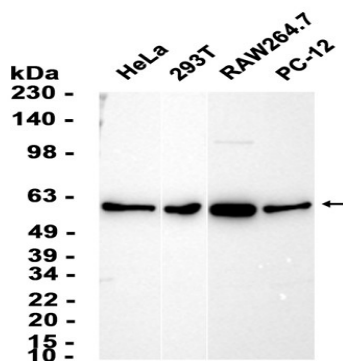
## Image Data



Western blot detection of PRPF31 in C2C12,PC3 cell lysates using PRPF31 antibody(1:1000 diluted).



Immunofluorescent analysis of HeLa cells using AMRe87398 antibody (green), and DAPI (blue).



Western blot analysis of extracts from HeLa,293T,RAW264.7,PC-12 cells using AMRe87398 at 1:3000.

**Product Name: PRPF31 Rabbit Monoclonal Antibody**  
**Catalog #: AMRe87398**

---



**Note**

For research use only.