
Product Name: PKC theta/PRKCQ Rabbit Monoclonal Antibody**Catalog #: AMRe87396**

For research use only.

Summary

| | |
|----------------------|--|
| Description | Recombinant rabbit monoclonal antibody |
| Host | Rabbit |
| Application | WB,IHC,FC |
| Reactivity | Human |
| Conjugation | Unconjugated |
| Modification | Unmodified |
| Isotype | IgG |
| Clonality | Monoclonal |
| Form | Liquid |
| Concentration | |
| Storage | Aliquot and store at -20°C (valid for 12 months). Avoid freeze/thaw cycles. |
| Shipping | Ice bags |
| Buffer | Supplied in 50mM Tris-Glycine(pH 7.4), 0.15M NaCl, 40% Glycerol, 0.01% sodium azide and 0.05% protective protein. Stable for 12 months from date of receipt. |
| Purification | Affinity Purification |

Application

| | |
|-------------------------|---|
| Dilution Ratio | WB 1:500-1:2000,IHC 1:200-1:2000,FC 1:20-1:50 |
| Molecular Weight | Calculated MW:82 kDa; Observed MW:79 kDa |

Antigen Information

| | |
|--------------------------|--|
| Gene Name | PKC theta/PRKCQ |
| Alternative Names | PRKCT; nPKC-theta |
| Gene ID | 5588 |
| SwissProt ID | Q04759 |
| Immunogen | A synthetic peptide of human PKC theta/PRKCQ |

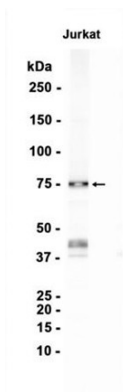
Background

Protein kinase C (PKC) is a family of serine- and threonine-specific protein kinases that can be activated by calcium and the second messenger diacylglycerol. PKC family members phosphorylate a wide variety of protein targets and are known to be

involved in diverse cellular signaling pathways. PKC family members also serve as major receptors for phorbol esters, a class of tumor promoters. Each member of the PKC family has a specific expression profile and is believed to play a distinct role. The protein encoded by this gene is one of the PKC family members. It is a calcium-independent and phospholipid-dependent protein kinase. This kinase is important for T-cell activation. It is required for the activation of the transcription factors NF-kappaB and AP-1, and may link the T cell receptor (TCR) signaling complex to the activation of the transcription factors. [provided by RefSeq, Jul 2008]

Research Area

Image Data



Western blot analysis of extracts from Jurkat cells using PKC theta/PRKCQ Rabbit Monoclonal Antibody at 1:1000.