

---

**Product Name: CD28 Rabbit Monoclonal Antibody****Catalog #: AMRe87395**

For research use only.

**Summary**

<b>Description</b>	Recombinant rabbit monoclonal antibody
<b>Host</b>	Rabbit
<b>Application</b>	WB,IHC,ICC/IF,IP
<b>Reactivity</b>	Human,Mouse,Rat
<b>Conjugation</b>	Unconjugated
<b>Modification</b>	Unmodified
<b>Isotype</b>	IgG
<b>Clonality</b>	Monoclonal
<b>Form</b>	Liquid
<b>Concentration</b>	
<b>Storage</b>	Aliquot and store at -20°C (valid for 12 months). Avoid freeze/thaw cycles.
<b>Shipping</b>	Ice bags
<b>Buffer</b>	Supplied in 50mM Tris-Glycine(pH 7.4), 0.15M NaCl, 40% Glycerol, 0.01% sodium azide and 0.05% protective protein. Stable for 12 months from date of receipt.
<b>Purification</b>	Affinity Purification

**Application**

<b>Dilution Ratio</b>	WB 1:500-1:2000,IHC 1:200-1:2000,ICC/IF 1:20-1:50,IP 1:20-1:50
<b>Molecular Weight</b>	Calculated MW:25 kDa; Observed MW:40-60,14 kDa

**Antigen Information**

<b>Gene Name</b>	CD28
<b>Alternative Names</b>	Tp44
<b>Gene ID</b>	940
<b>SwissProt ID</b>	P10747
<b>Immunogen</b>	A synthetic peptide of human CD28

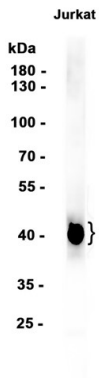
**Background**

The protein encoded by this gene is essential for T-cell proliferation and survival, cytokine production, and T-helper type-2 development. Several alternatively spliced transcript variants encoding different isoforms have been found for this gene.

[provided by RefSeq, Jul 2011]

## Research Area

## Image Data



Western blot analysis of extracts from Mouse thymus tissue using CD28 Rabbit Monoclonal Antibody at 1:1000.