

**Product Name: MEF2B Rabbit Monoclonal Antibody****Catalog #: AMRe87394**

For research use only.

**Summary**

<b>Description</b>	Recombinant rabbit monoclonal antibody
<b>Host</b>	Rabbit
<b>Application</b>	WB,IHC,FC,IP
<b>Reactivity</b>	Human
<b>Conjugation</b>	Unconjugated
<b>Modification</b>	Unmodified
<b>Isotype</b>	IgG
<b>Clonality</b>	Monoclonal
<b>Form</b>	Liquid
<b>Concentration</b>	
<b>Storage</b>	Aliquot and store at -20°C (valid for 12 months). Avoid freeze/thaw cycles.
<b>Shipping</b>	Ice bags
<b>Buffer</b>	Supplied in 50mM Tris-Glycine(pH 7.4), 0.15M NaCl, 40% Glycerol, 0.01% sodium azide and 0.05% protective protein. Stable for 12 months from date of receipt.
<b>Purification</b>	Affinity Purification

**Application**

<b>Dilution Ratio</b>	WB 1:500-1:2000,IHC 1:200-1:500,FC 1:200-1:500,IP 1:20-1:50
<b>Molecular Weight</b>	Calculated MW:39 kDa; Observed MW:

**Antigen Information**

<b>Gene Name</b>	MEF2B
<b>Alternative Names</b>	RSRFR2
<b>Gene ID</b>	100271849
<b>SwissProt ID</b>	Q02080
<b>Immunogen</b>	Recombinant protein of human MEF2B

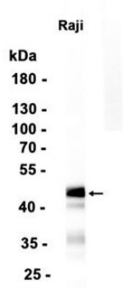
**Background**

The product of this gene is a member of the MADS/MEF2 family of DNA binding proteins. The protein is thought to regulate gene expression, including expression of the smooth muscle myosin heavy chain gene. This region undergoes considerable

alternative splicing, with transcripts supporting two non-overlapping loci (GeneID 729991 and 100271849) as well as numerous read-through transcripts that span both loci (annotated as GeneID 4207). Several isoforms of this protein are expressed from either this locus or from some of the read-through transcripts annotated on GeneID 4207. [provided by RefSeq, Jan 2014]

## Research Area

## Image Data



Western blot analysis of extracts from Raji cells using MEF2B Rabbit Monoclonal Antibody at 1:1000.