

---

**Product Name: ENPP1 Rabbit Monoclonal Antibody****Catalog #: AMRe87392**

For research use only.

**Summary**

<b>Description</b>	Recombinant rabbit monoclonal antibody
<b>Host</b>	Rabbit
<b>Application</b>	WB,IHC,ICC/IF,FC,IP
<b>Reactivity</b>	Human
<b>Conjugation</b>	Unconjugated
<b>Modification</b>	Unmodified
<b>Isotype</b>	IgG
<b>Clonality</b>	Monoclonal
<b>Form</b>	Liquid
<b>Concentration</b>	
<b>Storage</b>	Aliquot and store at -20°C (valid for 12 months). Avoid freeze/thaw cycles.
<b>Shipping</b>	Ice bags
<b>Buffer</b>	Supplied in 50mM Tris-Glycine(pH 7.4), 0.15M NaCl, 40% Glycerol, 0.01% sodium azide and 0.05% protective protein. Stable for 12 months from date of receipt.
<b>Purification</b>	Affinity Purification

**Application**

<b>Dilution Ratio</b>	WB 1:500-1:2000,IHC 1:200-1:500,ICC/IF 1:100-1:200,FC 1:20-1:50,IP 1:20-1:50
<b>Molecular Weight</b>	Calculated MW:105 kDa; Observed MW:140 kDa

**Antigen Information**

<b>Gene Name</b>	ENPP1
<b>Alternative Names</b>	M6S1; NPP1; NPPS; PC-1; PCA1; ARHR2; COLED; PDNP1
<b>Gene ID</b>	5167
<b>SwissProt ID</b>	P22413
<b>Immunogen</b>	A synthetic peptide of human ENPP1

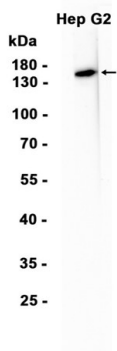
**Background**

This gene is a member of the ecto-nucleotide pyrophosphatase/phosphodiesterase (ENPP) family. The encoded protein is a type II transmembrane glycoprotein comprising two identical disulfide-bonded subunits. This protein has broad specificity and

cleaves a variety of substrates, including phosphodiester bonds of nucleotides and nucleotide sugars and pyrophosphate bonds of nucleotides and nucleotide sugars. This protein may function to hydrolyze nucleoside 5' triphosphates to their corresponding monophosphates and may also hydrolyze diadenosine polyphosphates. Mutations in this gene have been associated with 'idiopathic' infantile arterial calcification, ossification of the posterior longitudinal ligament of the spine (OPLL), and insulin resistance. [provided by RefSeq, Jul 2008]

## Research Area

## Image Data



Western blot analysis of extracts from HepG2 cells using ENPP1 Rabbit Monoclonal Antibody at 1:1000.