

Product Name: TIM 3 Rabbit Monoclonal Antibody
Catalog #: AMRe87390



Summary

Production Name	TIM 3 Rabbit Monoclonal Antibody
Description	Rabbit Monoclonal antibody
Host	Rabbit
Application	WB, IHC-P, IP
Reactivity	Human,Mouse,Rat

Performance

Conjugation	Unconjugated
Modification	Unmodified
Isotype	IgG
Clonality	Monoclonal
Form	Liquid
Storage	Store at 4°C short term. Aliquot and store at -20°C long term. Avoid freeze/thaw cycles.
Buffer	Supplied in 50mM Tris-Glycine(pH 7.4), 0.15M NaCl, 40% Glycerol, 0.01% sodium azide and 0.05% protective protein. Stable for 12 months from date of receipt.
Purification	Affinity Purification

Immunogen

Gene Name	TIM 3
Alternative Names	TIM3; CD366; KIM-3; SPTCL; TIMD3; Tim-3; TIMD-3; HAVcr-2
Gene ID	84868
SwissProt ID	Q8TDQ0.

Application

Dilution Ratio	WB: 1:1000 IHC-P: 1:200-1:1000 IP: 1:20-1:50
Molecular Weight	Calculated MW:33 kDa; Observed MW:45-70 kDa

Background

The protein encoded by this gene belongs to the immunoglobulin superfamily, and TIM family of proteins. CD4-positive T

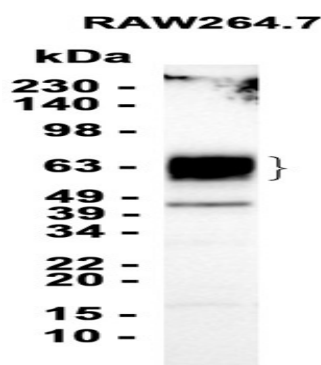
Product Name: TIM 3 Rabbit Monoclonal Antibody
Catalog #: AMRe87390



helper lymphocytes can be divided into types 1 (Th1) and 2 (Th2) on the basis of their cytokine secretion patterns. Th1 cells are involved in cell-mediated immunity to intracellular pathogens and delayed-type hypersensitivity reactions, whereas, Th2 cells are involved in the control of extracellular helminthic infections and the promotion of atopic and allergic diseases. This protein is a Th1-specific cell surface protein that regulates macrophage activation, and inhibits Th1-mediated auto- and alloimmune responses, and promotes immunological tolerance. [provided by RefSeq, Sep 2011]

Research Area

Image Data



Western blot analysis of extracts from RAW264.7 cells using AMRe87390 at 1:1000.

Note

For research use only.