

---

**Product Name: Podoplanin/gp36 Rabbit Monoclonal Antibody****Catalog #: AMRe87388**

For research use only.

**Summary**

<b>Description</b>	Recombinant rabbit monoclonal antibody
<b>Host</b>	Rabbit
<b>Application</b>	WB,IHC,FC,IP
<b>Reactivity</b>	Human
<b>Conjugation</b>	Unconjugated
<b>Modification</b>	Unmodified
<b>Isotype</b>	IgG
<b>Clonality</b>	Monoclonal
<b>Form</b>	Liquid
<b>Concentration</b>	0.15mg/ml. The concentration of this product may be batch-dependent.
<b>Storage</b>	Aliquot and store at -20°C (valid for 12 months). Avoid freeze/thaw cycles.
<b>Shipping</b>	Ice bags
<b>Buffer</b>	Supplied in 50mM Tris-Glycine(pH 7.4), 0.15M NaCl, 40% Glycerol, 0.01% sodium azide and 0.05% protective protein. Stable for 12 months from date of receipt.
<b>Purification</b>	Affinity Purification

**Application**

<b>Dilution Ratio</b>	WB 1:500-1:2000,IHC 1:500-1:2000,FC 1:200-1:500,IP 1:20-1:50
<b>Molecular Weight</b>	Calculated MW:17 kDa; Observed MW:36 kDa

**Antigen Information**

<b>Gene Name</b>	Podoplanin/gp36
<b>Alternative Names</b>	T1A; GP36; GP40; Gp38; OTS8; T1A2; T1A; T1A-2; AGGRUS; HT1A-1; PA2.26
<b>Gene ID</b>	10630
<b>SwissProt ID</b>	Q86YL7
<b>Immunogen</b>	Recombinant protein of human Podoplanin/gp36

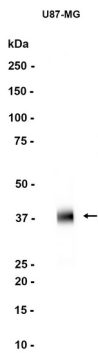
**Background**

This gene encodes a type-I integral membrane glycoprotein with diverse distribution in human tissues. The physiological function of this protein may be related to its mucin-type character. The homologous protein in other species has been

described as a differentiation antigen and influenza-virus receptor. The specific function of this protein has not been determined but it has been proposed as a marker of lung injury. Alternatively spliced transcript variants encoding different isoforms have been identified. [provided by RefSeq, Jul 2008]

## Research Area

## Image Data



Western blot analysis of extracts from U-87 MG cells using Podoplanin/gp36 Rabbit Monoclonal Antibody at 1:1000.