

Product Name: SNPH Rabbit Monoclonal Antibody**Catalog #: AMRe87384**

For research use only.

Summary

Description	Recombinant rabbit monoclonal antibody
Host	Rabbit
Application	WB,IHC
Reactivity	Human,Mouse,Rat
Conjugation	Unconjugated
Modification	Unmodified
Isotype	IgG
Clonality	Monoclonal
Form	Liquid
Concentration	
Storage	Aliquot and store at -20°C (valid for 12 months). Avoid freeze/thaw cycles.
Shipping	Ice bags
Buffer	Supplied in 50mM Tris-Glycine(pH 7.4), 0.15M NaCl, 40% Glycerol, 0.01% sodium azide and 0.05% protective protein. Stable for 12 months from date of receipt.
Purification	Affinity Purification

Application

Dilution Ratio	WB 1:1000-1:5000,IHC 1:200-1:1000
Molecular Weight	Calculated MW:54 kDa; Observed MW:75 kDa

Antigen Information

Gene Name	SNPH
Alternative Names	Syntaphilin
Gene ID	9751
SwissProt ID	O15079
Immunogen	A synthetic peptide of human SNPH

Background

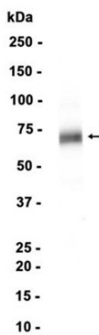
Syntaxin-1, synaptobrevin/VAMP, and SNAP25 interact to form the SNARE complex, which is required for synaptic vesicle docking and fusion. The protein encoded by this gene is membrane-associated and inhibits SNARE complex formation by

binding free syntaxin-1. Expression of this gene appears to be brain-specific. Alternative splicing results in multiple transcript variants encoding different isoforms. [provided by RefSeq, Dec 2015]

Research Area

Image Data

Rat brain



Western blot analysis of extracts from Rat brain tissue using SNPH Rabbit Monoclonal Antibody at 1:1000.