

---

**Product Name: B7H4 Rabbit Monoclonal Antibody****Catalog #: AMRe87364**

For research use only.

**Summary**

<b>Description</b>	Recombinant rabbit monoclonal antibody
<b>Host</b>	Rabbit
<b>Application</b>	WB,IHC,ICC/IF
<b>Reactivity</b>	Human
<b>Conjugation</b>	Unconjugated
<b>Modification</b>	Unmodified
<b>Isotype</b>	IgG
<b>Clonality</b>	Monoclonal
<b>Form</b>	Liquid
<b>Concentration</b>	0.5mg/ml. The concentration of this product may be batch-dependent.
<b>Storage</b>	Aliquot and store at -20°C (valid for 12 months). Avoid freeze/thaw cycles.
<b>Shipping</b>	Ice bags
<b>Buffer</b>	Supplied in 50mM Tris-Glycine(pH 7.4), 0.15M NaCl, 40% Glycerol, 0.01% sodium azide and 0.05% protective protein. Stable for 12 months from date of receipt.
<b>Purification</b>	Affinity Purification

**Application**

<b>Dilution Ratio</b>	WB 1:500-1:2000,IHC 1:200-1:1000,ICC/IF 1:100-1:200
<b>Molecular Weight</b>	Calculated MW:31 kDa; Observed MW:70 kDa

**Antigen Information**

<b>Gene Name</b>	B7H4
<b>Alternative Names</b>	B7X; B7H4; B7S1; B7-H4; B7h.5; VCTN1; PRO1291
<b>Gene ID</b>	79679
<b>SwissProt ID</b>	Q7Z7D3
<b>Immunogen</b>	Recombinant protein of human B7H4

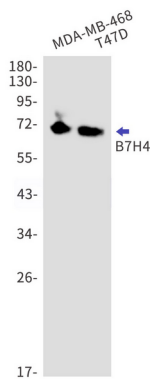
**Background**

This gene encodes a protein belonging to the B7 costimulatory protein family. Proteins in this family are present on the surface of antigen-presenting cells and interact with ligand bound to receptors on the surface of T cells. Studies have shown that high

levels of the encoded protein has been correlated with tumor progression. A pseudogene of this gene is located on chromosome 20. Multiple transcript variants encoding different isoforms have been found for this gene. [provided by RefSeq, Dec 2011]

## Research Area

## Image Data



Western blot detection of B7H4 in MDA-MB-468 , T47D cell lysates using B7H4 antibody(1:1000 diluted).