

Product Name: Ficolin 2 Rabbit Monoclonal Antibody**Catalog #: AMRe87360**

For research use only.

Summary

| | |
|----------------------|--|
| Description | Recombinant rabbit monoclonal antibody |
| Host | Rabbit |
| Application | WB,IP |
| Reactivity | Human |
| Conjugation | Unconjugated |
| Modification | Unmodified |
| Isotype | IgG |
| Clonality | Monoclonal |
| Form | Liquid |
| Concentration | |
| Storage | Aliquot and store at -20°C (valid for 12 months). Avoid freeze/thaw cycles. |
| Shipping | Ice bags |
| Buffer | Supplied in 50mM Tris-Glycine(pH 7.4), 0.15M NaCl, 40% Glycerol, 0.01% sodium azide and 0.05% protective protein. Stable for 12 months from date of receipt. |
| Purification | Affinity Purification |

Application

| | |
|-------------------------|--|
| Dilution Ratio | WB 1:500-1:2000,IP 1:20-1:50 |
| Molecular Weight | Calculated MW:34 kDa; Observed MW:34 kDa |

Antigen Information

| | |
|--------------------------|--|
| Gene Name | Ficolin 2 |
| Alternative Names | P35; FCNL; EBP-37; ficolin-2 |
| Gene ID | 2220 |
| SwissProt ID | Q15485 |
| Immunogen | Recombinant protein of human Ficolin 2 |

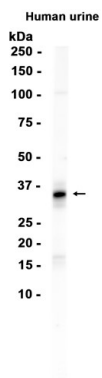
Background

The product of this gene belongs to the ficolin family of proteins. This family is characterized by the presence of a leader peptide, a short N-terminal segment, followed by a collagen-like region, and a C-terminal fibrinogen-like domain. This gene is

predominantly expressed in the liver, and has been shown to have carbohydrate binding and opsonic activities. Alternatively spliced transcript variants encoding different isoforms have been identified. [provided by RefSeq, Jul 2008]

Research Area

Image Data



Western blot analysis of extracts from Human urine tissue using Ficolin 2 Rabbit Monoclonal Antibody at 1:1000.