

Product Name: WSTF Rabbit Monoclonal Antibody**Catalog #: AMRe87341**

For research use only.

Summary

| | |
|----------------------|--|
| Description | Recombinant rabbit monoclonal antibody |
| Host | Rabbit |
| Application | WB |
| Reactivity | Human, Mouse, Rat |
| Conjugation | Unconjugated |
| Modification | Unmodified |
| Isotype | IgG |
| Clonality | Monoclonal |
| Form | Liquid |
| Concentration | |
| Storage | Aliquot and store at -20°C (valid for 12 months). Avoid freeze/thaw cycles. |
| Shipping | Ice bags |
| Buffer | Supplied in 50mM Tris-Glycine(pH 7.4), 0.15M NaCl, 40% Glycerol, 0.01% sodium azide and 0.05% protective protein. Stable for 12 months from date of receipt. |
| Purification | Affinity Purification |

Application

| | |
|-------------------------|--|
| Dilution Ratio | WB 1:1000-1:5000 |
| Molecular Weight | Calculated MW:171 kDa; Observed MW:185 kDa |

Antigen Information

| | |
|--------------------------|-----------------------------------|
| Gene Name | WSTF |
| Alternative Names | WSTF; WBSCR9; WBSCR10 |
| Gene ID | 9031 |
| SwissProt ID | Q9UIG0 |
| Immunogen | A synthetic peptide of human WSTF |

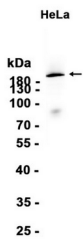
Background

This gene encodes a member of the bromodomain protein family. The bromodomain is a structural motif characteristic of proteins involved in chromatin-dependent regulation of transcription. This gene is deleted in Williams-Beuren syndrome, a

developmental disorder caused by deletion of multiple genes at 7q11.23. [provided by RefSeq, Jul 2008]

Research Area

Image Data



Western blot analysis of extracts from HeLa cells using WSTF Rabbit Monoclonal Antibody at 1:1000.