
Product Name: Carma 1/CARD11 Rabbit Monoclonal Antibody**Catalog #: AMRe87340**

For research use only.

Summary

| | |
|----------------------|--|
| Description | Recombinant rabbit monoclonal antibody |
| Host | Rabbit |
| Application | WB |
| Reactivity | Human, Mouse |
| Conjugation | Unconjugated |
| Modification | Unmodified |
| Isotype | IgG |
| Clonality | Monoclonal |
| Form | Liquid |
| Concentration | |
| Storage | Aliquot and store at -20°C (valid for 12 months). Avoid freeze/thaw cycles. |
| Shipping | Ice bags |
| Buffer | Supplied in 50mM Tris-Glycine(pH 7.4), 0.15M NaCl, 40% Glycerol, 0.01% sodium azide and 0.05% protective protein. Stable for 12 months from date of receipt. |
| Purification | Affinity Purification |

Application

| | |
|-------------------------|--|
| Dilution Ratio | WB 1:1000-1:5000 |
| Molecular Weight | Calculated MW:133 kDa; Observed MW:133 kDa |

Antigen Information

| | |
|--------------------------|---|
| Gene Name | Carma 1/CARD11 |
| Alternative Names | PPBL; BENTA; BIMP3; IMD11; CARMA1; IMD11A |
| Gene ID | 84433 |
| SwissProt ID | Q9BXL7 |
| Immunogen | A synthetic peptide of human Carma 1/CARD11 |

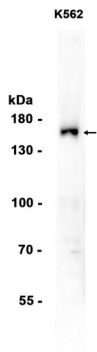
Background

The protein encoded by this gene belongs to the membrane-associated guanylate kinase (MAGUK) family, a class of proteins that functions as molecular scaffolds for the assembly of multiprotein complexes at specialized regions of the plasma

membrane. This protein is also a member of the CARD protein family, which is defined by carrying a characteristic caspase-associated recruitment domain (CARD). This protein has a domain structure similar to that of CARD14 protein. The CARD domains of both proteins have been shown to specifically interact with BCL10, a protein known to function as a positive regulator of cell apoptosis and NF-kappaB activation. When expressed in cells, this protein activated NF-kappaB and induced the phosphorylation of BCL10. [provided by RefSeq, Jul 2008]

Research Area

Image Data



Western blot analysis of extracts from K562 cells using Carma 1/CARD11 Rabbit Monoclonal Antibody at 1:1000.