

## Summary

<b>Production Name</b>	Lumican Rabbit Monoclonal Antibody
<b>Description</b>	Rabbit Monoclonal antibody
<b>Host</b>	Rabbit
<b>Application</b>	WB, IHC-P, ICC/IF, FC
<b>Reactivity</b>	Human,Mouse,Rat

## Performance

<b>Conjugation</b>	Unconjugated
<b>Modification</b>	Unmodified
<b>Isotype</b>	IgG
<b>Clonality</b>	Monoclonal
<b>Form</b>	Liquid
<b>Storage</b>	Store at 4°C short term. Aliquot and store at -20°C long term. Avoid freeze/thaw cycles.
<b>Buffer</b>	Supplied in 50mM Tris-Glycine(pH 7.4), 0.15M NaCl, 40% Glycerol, 0.01% sodium azide and 0.05% BSA. Stable for 12 months from date of receipt.
<b>Purification</b>	Affinity Purification

## Immunogen

<b>Gene Name</b>	Lumican
<b>Alternative Names</b>	LDC; SLRR2D
<b>Gene ID</b>	4060
<b>SwissProt ID</b>	P51884.

## Application

<b>Dilution Ratio</b>	WB: 1:1000-1:5000 IHC-P: 1:50-1:100 ICC/IF: 1:200-1:500 FC: 1:100-1:200
<b>Molecular Weight</b>	Calculated MW:38 kDa; Observed MW:60 kDa

## Background

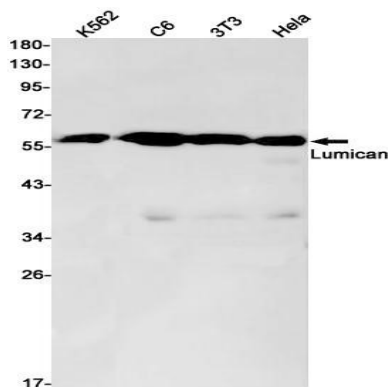
**Product Name: Lumican Rabbit Monoclonal Antibody**  
**Catalog #: AMRe87328**



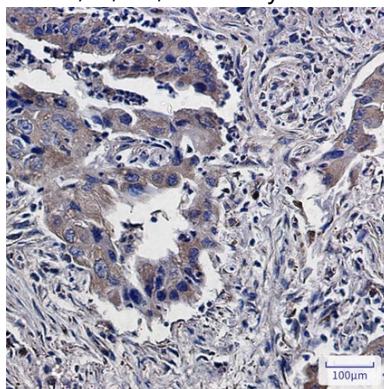
This gene encodes a member of the small leucine-rich proteoglycan (SLRP) family that includes decorin, biglycan, fibromodulin, keratocan, epiphykan, and osteoglycin. In these bifunctional molecules, the protein moiety binds collagen fibrils and the highly charged hydrophilic glycosaminoglycans regulate interfibrillar spacings. Lumican is the major keratan sulfate proteoglycan of the cornea but is also distributed in interstitial collagenous matrices throughout the body. Lumican may regulate collagen fibril organization and circumferential growth, corneal transparency, and epithelial cell migration and tissue repair. [provided by RefSeq, Jul 2008]

## Research Area

## Image Data

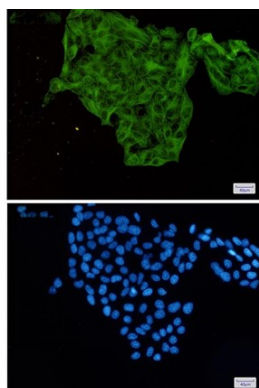


Western blot detection of Lumican in K562, C6, 3T3, HeLa cell lysates using Lumican antibody (1:1000 diluted).

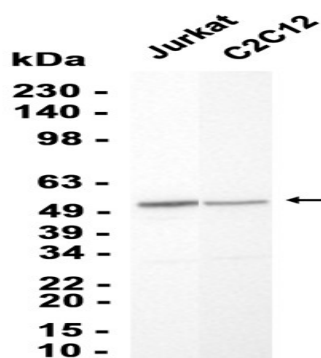


Immunohistochemical analysis of paraffin-embedded human lung cancer using AMRe87328 antibody.

**Product Name: Lumican Rabbit Monoclonal Antibody**  
**Catalog #: AMRe87328**



Immunofluorescent analysis of HeLa cells using AMRe87328 antibody (green), and DAPI (blue).



Western blot analysis of extracts from Jurkat, C2C12 cells using AMRe87328 at 1:1000.

## Note

For research use only.