

Summary

Production Name	MARS Rabbit Monoclonal Antibody
Description	Rabbit Monoclonal antibody
Host	Rabbit
Application	WB, ICC/IF
Reactivity	Human

Performance

Conjugation	Unconjugated
Modification	Unmodified
Isotype	IgG
Clonality	Monoclonal
Form	Liquid
Storage	Store at 4°C short term. Aliquot and store at -20°C long term. Avoid freeze/thaw cycles.
Buffer	Supplied in 50mM Tris-Glycine(pH 7.4), 0.15M NaCl, 40% Glycerol, 0.01% sodium azide and 0.05% BSA. Stable for 12 months from date of receipt.
Purification	Affinity Purification

Immunogen

Gene Name	MARS
Alternative Names	MRS; ILLD; CMT2U; ILFS2; METRS; MTRNS; SPG70
Gene ID	4141
SwissProt ID	P56192.

Application

Dilution Ratio	WB: 1:1000-1:5000 ICC/IF: 1:200-1:500
Molecular Weight	Calculated MW:101 kDa; Observed MW:101 kDa

Background

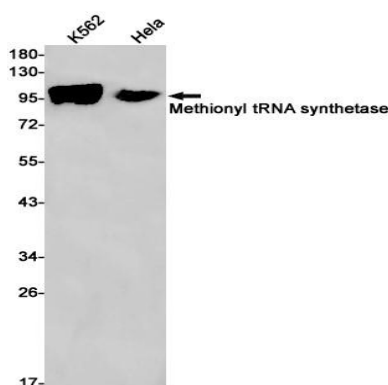
Product Name: MARS Rabbit Monoclonal Antibody
Catalog #: AMRe87319



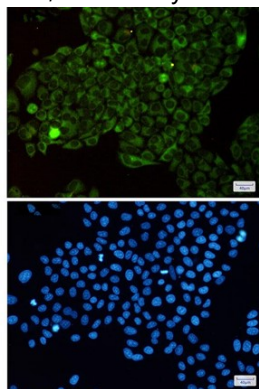
This gene encodes a member of the class I family of aminoacyl-tRNA synthetases. These enzymes play a critical role in protein biosynthesis by charging tRNAs with their cognate amino acids. The encoded protein is a component of the multi-tRNA synthetase complex and catalyzes the ligation of methionine to tRNA molecules. [provided by RefSeq, Jan 2011]

Research Area

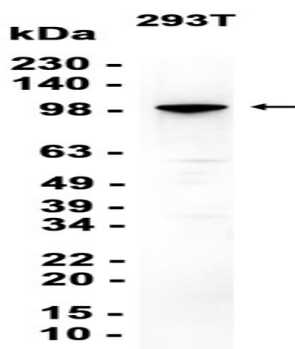
Image Data



Western blot detection of MARS in K562, HeLa cell lysates using MARS antibody(1:1000 diluted).



Immunofluorescent analysis of HeLa cells using AMRe87319 antibody (green), and DAPI (blue).



Western blot analysis of extracts from 293T cells using AMRe87319 at 1:1000.

Product Name: MARS Rabbit Monoclonal Antibody
Catalog #: AMRe87319



Note

For research use only.