
Product Name: TAF1C Rabbit Monoclonal Antibody**Catalog #: AMRe87310**

For research use only.

Summary

| | |
|----------------------|--|
| Description | Recombinant rabbit monoclonal antibody |
| Host | Rabbit |
| Application | WB,IP |
| Reactivity | Human |
| Conjugation | Unconjugated |
| Modification | Unmodified |
| Isotype | IgG |
| Clonality | Monoclonal |
| Form | Liquid |
| Concentration | |
| Storage | Aliquot and store at -20°C (valid for 12 months). Avoid freeze/thaw cycles. |
| Shipping | Ice bags |
| Buffer | Supplied in 50mM Tris-Glycine(pH 7.4), 0.15M NaCl, 40% Glycerol, 0.01% sodium azide and 0.05% protective protein. Stable for 12 months from date of receipt. |
| Purification | Affinity Purification |

Application

| | |
|-------------------------|--|
| Dilution Ratio | WB 1:1000-1:5000,IP 1:10-1:100 |
| Molecular Weight | Calculated MW:95 kDa; Observed MW:95 kDa |

Antigen Information

| | |
|--------------------------|------------------------------------|
| Gene Name | TAF1C |
| Alternative Names | SL1; TAFI95; TAFI110; MGC:39976 |
| Gene ID | 9013 |
| SwissProt ID | Q15572 |
| Immunogen | A synthetic peptide of human TAF1C |

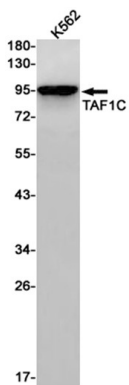
Background

Initiation of transcription by RNA polymerase I requires the formation of a complex composed of the TATA-binding protein (TBP) and three TBP-associated factors (TAFs) specific for RNA polymerase I. This complex, known as SL1, binds to the core

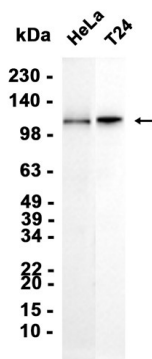
promoter of ribosomal RNA genes to position the polymerase properly and acts as a channel for regulatory signals. This gene encodes the largest SL1-specific TAF. Multiple alternatively spliced transcript variants encoding different isoforms have been identified. [provided by RefSeq, Jul 2011]

Research Area

Image Data



Western blot detection of TAF1C in K562 cell lysates using TAF1C antibody(1:1000 diluted).



Western blot analysis of extracts from HeLa, T24 cells using AMRe87310 at 1:1000.