
Product Name: PEF1 Rabbit Monoclonal Antibody**Catalog #: AMRe87307**

For research use only.

Summary

Description	Recombinant rabbit monoclonal antibody
Host	Rabbit
Application	WB,FC
Reactivity	Human,Mouse,Rat
Conjugation	Unconjugated
Modification	Unmodified
Isotype	IgG
Clonality	Monoclonal
Form	Liquid
Concentration	
Storage	Aliquot and store at -20°C (valid for 12 months). Avoid freeze/thaw cycles.
Shipping	Ice bags
Buffer	Supplied in 50mM Tris-Glycine(pH 7.4), 0.15M NaCl, 40% Glycerol, 0.01% sodium azide and 0.05% protective protein. Stable for 12 months from date of receipt.
Purification	Affinity Purification

Application

Dilution Ratio	WB 1:1000-1:5000,FC 1:10-1:100
Molecular Weight	Calculated MW:30 kDa; Observed MW:30 kDa

Antigen Information

Gene Name	PEF1
Alternative Names	ABP32; PEF1A
Gene ID	553115
SwissProt ID	Q9UBV8
Immunogen	A synthetic peptide of human PEF1

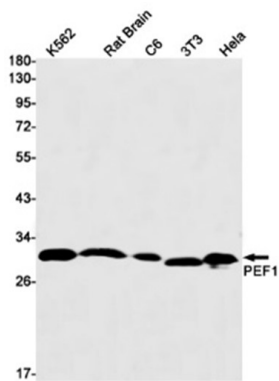
Background

This gene encodes a calcium-binding protein belonging to the penta-EF-hand protein family. The encoded protein has been shown to form a heterodimer with the programmed cell death 6 gene product and may modulate its function in Ca²⁺

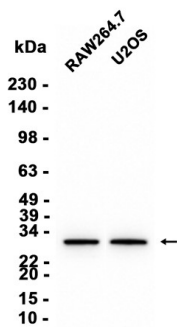
signaling. Alternative splicing results in multiple transcript variants and a pseudogene has been identified on chromosome 1.
[provided by RefSeq, May 2010]

Research Area

Image Data



Western blot detection of PEF1 in K562, Rat Brain, C6, 3T3, HeLa cell lysates using PEF1 antibody (1:1000 diluted).



Western blot analysis of extracts from RAW264.7, U2OS cells using AMRe87307 at 1:3000.