
Product Name: ATTY Rabbit Monoclonal Antibody**Catalog #: AMRe87306**

For research use only.

Summary

Description	Recombinant rabbit monoclonal antibody
Host	Rabbit
Application	WB,IHC
Reactivity	Human,Mouse,Rat
Conjugation	Unconjugated
Modification	Unmodified
Isotype	IgG
Clonality	Monoclonal
Form	Liquid
Concentration	
Storage	Aliquot and store at -20°C (valid for 12 months). Avoid freeze/thaw cycles.
Shipping	Ice bags
Buffer	Supplied in 50mM Tris-Glycine(pH 7.4), 0.15M NaCl, 40% Glycerol, 0.01% sodium azide and 0.05% protective protein. Stable for 12 months from date of receipt.
Purification	Affinity Purification

Application

Dilution Ratio	WB 1:1000-1:5000,IHC 1:50-1:100
Molecular Weight	Calculated MW:50 kDa; Observed MW:50 kDa

Antigen Information

Gene Name	ATTY
Alternative Names	TAT; Tyrosine aminotransferase
Gene ID	6898
SwissProt ID	P17735
Immunogen	A synthetic peptide of human ATTY

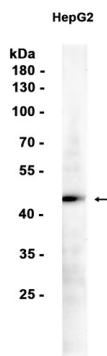
Background

This nuclear gene encodes a mitochondrial protein tyrosine aminotransferase which is present in the liver and catalyzes the conversion of L-tyrosine into p-hydroxyphenylpyruvate. Mutations in this gene cause tyrosinemia (type II, Richner-Hanhart

syndrome), a disorder accompanied by major skin and corneal lesions, with possible cognitive disability. A regulator gene for tyrosine aminotransferase is X-linked. [provided by RefSeq, Jul 2008]

Research Area

Image Data



Western blot analysis of extracts from HepG2 cells using ATTY Rabbit Monoclonal Antibody at 1:100.