
Product Name: TAB3 Rabbit Monoclonal Antibody**Catalog #: AMRe87305**

For research use only.

Summary

Description	Recombinant rabbit monoclonal antibody
Host	Rabbit
Application	WB,ICC/IF
Reactivity	Human,Mouse
Conjugation	Unconjugated
Modification	Unmodified
Isotype	IgG
Clonality	Monoclonal
Form	Liquid
Concentration	
Storage	Aliquot and store at -20°C (valid for 12 months). Avoid freeze/thaw cycles.
Shipping	Ice bags
Buffer	Supplied in 50mM Tris-Glycine(pH 7.4), 0.15M NaCl, 40% Glycerol, 0.01% sodium azide and 0.05% protective protein. Stable for 12 months from date of receipt.
Purification	Affinity Purification

Application

Dilution Ratio	WB 1:1000-1:5000,ICC/IF 1:20-1:50
Molecular Weight	Calculated MW:79 kDa; Observed MW:82 kDa

Antigen Information

Gene Name	TAB3
Alternative Names	NAP1; MAP3K7IP3
Gene ID	257397
SwissProt ID	Q8N5C8
Immunogen	A synthetic peptide of human TAB3

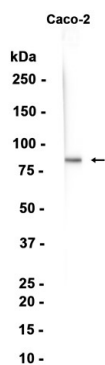
Background

The product of this gene functions in the NF-kappaB signal transduction pathway. The encoded protein, and the similar and functionally redundant protein MAP3K7IP2/TAB2, forms a ternary complex with the protein kinase MAP3K7/TAK1 and either

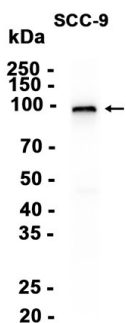
TRAF2 or TRAF6 in response to stimulation with the pro-inflammatory cytokines TNF or IL-1. Subsequent MAP3K7/TAK1 kinase activity triggers a signaling cascade leading to activation of the NF-kappaB transcription factor. The human genome contains a related pseudogene. Alternatively spliced transcript variants have been described, but their biological validity has not been determined. [provided by RefSeq, Jul 2008]

Research Area

Image Data



Western blot analysis of extracts from Caco-2 cells using TAB3 Rabbit Monoclonal Antibody at 1:1000.



Western blot analysis of extracts from SCC-9 cells using AMRe87305 at 1:1000.