
Product Name: BACE1 Rabbit Monoclonal Antibody**Catalog #: AMRe87292**

For research use only.

Summary

Description	Recombinant rabbit monoclonal antibody
Host	Rabbit
Application	WB,IHC,IP
Reactivity	Human,Mouse,Rat
Conjugation	Unconjugated
Modification	Unmodified
Isotype	IgG
Clonality	Monoclonal
Form	Liquid
Concentration	
Storage	Aliquot and store at -20°C (valid for 12 months). Avoid freeze/thaw cycles.
Shipping	Ice bags
Buffer	Supplied in 50mM Tris-Glycine(pH 7.4), 0.15M NaCl, 40% Glycerol, 0.01% sodium azide and 0.05% protective protein. Stable for 12 months from date of receipt.
Purification	Affinity Purification

Application

Dilution Ratio	WB 1:500-1:2000,IHC 1:50-1:100,IP 1:50-1:100
Molecular Weight	Calculated MW:56 kDa; Observed MW:70 kDa

Antigen Information

Gene Name	BACE1
Alternative Names	ASP2; Bace; C76936
Gene ID	23821
SwissProt ID	P56818
Immunogen	Recombinant protein of mouse BACE1

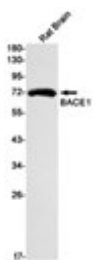
Background

This gene encodes a member of the peptidase A1 family of aspartic proteases. Alternative splicing results in multiple transcript variants, at least one of which encodes a preproprotein that is proteolytically processed to generate the mature protease. This

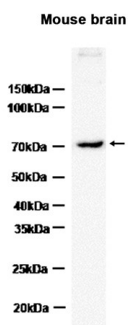
transmembrane protease catalyzes the first step in the formation of amyloid beta peptide from amyloid precursor protein. Amyloid beta peptides are the main constituent of amyloid beta plaques, which accumulate in the brains of human Alzheimer's disease patients. Homozygous knockout mice for this gene exhibit a wide range of nervous system defects, growth retardation, metabolic abnormalities, and increased neonatal lethality. [provided by RefSeq, Nov 2015]

Research Area

Image Data



Western blot detection of BACE1 in Rat Brain lysates using BACE1 antibody(1:1000 diluted).



Western blot analysis of extracts from Mouse brain tissue using AMRe87292 at 1:1000.