
Product Name: SCIN Rabbit Monoclonal Antibody**Catalog #: AMRe87284**

For research use only.

Summary

Description	Recombinant rabbit monoclonal antibody
Host	Rabbit
Application	WB
Reactivity	Human
Conjugation	Unconjugated
Modification	Unmodified
Isotype	IgG
Clonality	Monoclonal
Form	Liquid
Concentration	
Storage	Aliquot and store at -20°C (valid for 12 months). Avoid freeze/thaw cycles.
Shipping	Ice bags
Buffer	Supplied in 50mM Tris-Glycine(pH 7.4), 0.15M NaCl, 40% Glycerol, 0.01% sodium azide and 0.05% protective protein. Stable for 12 months from date of receipt.
Purification	Affinity Purification

Application

Dilution Ratio	WB 1:1000-1:5000
Molecular Weight	Calculated MW:81 kDa; Observed MW:81 kDa

Antigen Information

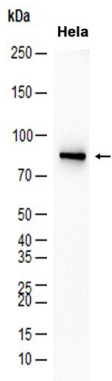
Gene Name	SCIN
Alternative Names	Adseverin; Scinderin
Gene ID	85477
SwissProt ID	Q9Y6U3
Immunogen	A synthetic peptide of human SCIN

Background

SCIN is a Ca(2+)-dependent actin-severing and -capping protein (Zunino et al., 2001 [PubMed 11568009]).[supplied by OMIM, May 2010]

Research Area

Image Data



Western blot analysis of extracts from HeLa cells using SCIN Rabbit Monoclonal Antibody at 1:4000.