

---

**Product Name: IGFBP6 Rabbit Monoclonal Antibody****Catalog #: AMRe87282**

For research use only.

**Summary**

<b>Description</b>	Recombinant rabbit monoclonal antibody
<b>Host</b>	Rabbit
<b>Application</b>	WB,ICC/IF,FC
<b>Reactivity</b>	Human
<b>Conjugation</b>	Unconjugated
<b>Modification</b>	Unmodified
<b>Isotype</b>	IgG
<b>Clonality</b>	Monoclonal
<b>Form</b>	Liquid
<b>Concentration</b>	
<b>Storage</b>	Aliquot and store at -20°C (valid for 12 months). Avoid freeze/thaw cycles.
<b>Shipping</b>	Ice bags
<b>Buffer</b>	Supplied in 50mM Tris-Glycine(pH 7.4), 0.15M NaCl, 40% Glycerol, 0.01% sodium azide and 0.05% protective protein. Stable for 12 months from date of receipt.
<b>Purification</b>	Affinity Purification

**Application**

<b>Dilution Ratio</b>	WB 1:500-1:2000,ICC/IF 1:100-1:200,FC 1:200-1:500
<b>Molecular Weight</b>	Calculated MW:25 kDa; Observed MW:35 kDa

**Antigen Information**

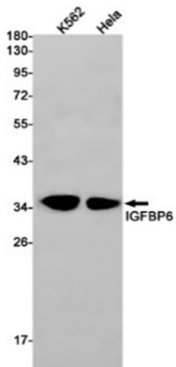
<b>Gene Name</b>	IGFBP6
<b>Alternative Names</b>	IBP6
<b>Gene ID</b>	3489
<b>SwissProt ID</b>	P24592
<b>Immunogen</b>	Recombinant protein of human IGFBP6

**Background**

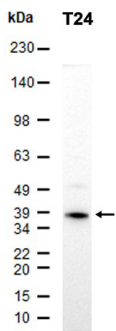
IGF-binding proteins prolong the half-life of the IGFs and have been shown to either inhibit or stimulate the growth promoting effects of the IGFs on cell culture. They alter the interaction of IGFs with their cell surface receptors.

## Research Area

## Image Data



Western blot detection of IGFBP6 in K562, HeLa cell lysates using IGFBP6 antibody (1:1000 diluted).



Western blot analysis of extracts from T24 cells using AMRe87282 at 1:1000.