
Product Name: PEPD Rabbit Monoclonal Antibody**Catalog #: AMRe87279**

For research use only.

Summary

Description	Recombinant rabbit monoclonal antibody
Host	Rabbit
Application	WB
Reactivity	Human
Conjugation	Unconjugated
Modification	Unmodified
Isotype	IgG
Clonality	Monoclonal
Form	Liquid
Concentration	
Storage	Aliquot and store at -20°C (valid for 12 months). Avoid freeze/thaw cycles.
Shipping	Ice bags
Buffer	Supplied in 50mM Tris-Glycine(pH 7.4), 0.15M NaCl, 40% Glycerol, 0.01% sodium azide and 0.05% protective protein. Stable for 12 months from date of receipt.
Purification	Affinity Purification

Application

Dilution Ratio	WB 1:500-1:2000
Molecular Weight	Calculated MW:55 kDa; Observed MW:55 kDa

Antigen Information

Gene Name	PEPD
Alternative Names	PROLIDASE
Gene ID	5184
SwissProt ID	P12955
Immunogen	A synthetic peptide of human PEPD

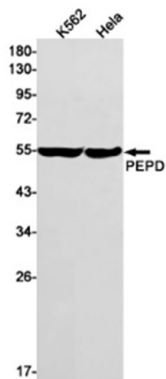
Background

This gene encodes a member of the peptidase family. The protein forms a homodimer that hydrolyzes dipeptides or tripeptides with C-terminal proline or hydroxyproline residues. The enzyme serves an important role in the recycling of proline, and may be

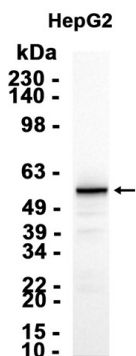
rate limiting for the production of collagen. Mutations in this gene result in prolydase deficiency, which is characterized by the excretion of large amount of di- and tri-peptides containing proline. Multiple transcript variants encoding different isoforms have been found for this gene.[provided by RefSeq, Oct 2009]

Research Area

Image Data



Western blot detection of PEPD in K562, HeLa cell lysates using PEPD antibody (1:1000 diluted).



Western blot analysis of extracts from HepG2 cells using AMRe87279 at 1:1000.