
Product Name: HCE Rabbit Monoclonal Antibody**Catalog #: AMRe87277**

For research use only.

Summary

Description	Recombinant rabbit monoclonal antibody
Host	Rabbit
Application	WB,IHC,ICC/IF,IP
Reactivity	Human, Mouse, Rat
Conjugation	Unconjugated
Modification	Unmodified
Isotype	IgG
Clonality	Monoclonal
Form	Liquid
Concentration	
Storage	Aliquot and store at -20°C (valid for 12 months). Avoid freeze/thaw cycles.
Shipping	Ice bags
Buffer	Supplied in 50mM Tris-Glycine(pH 7.4), 0.15M NaCl, 40% Glycerol, 0.01% sodium azide and 0.05% protective protein. Stable for 12 months from date of receipt.
Purification	Affinity Purification

Application

Dilution Ratio	WB 1:500-1:2000,IHC 1:50-1:100,ICC/IF 1:20-1:50,IP 1:20-1:50
Molecular Weight	Calculated MW:69 kDa; Observed MW:69 kDa

Antigen Information

Gene Name	HCE
Alternative Names	HCE; HCE1; hCAP; CAP1A
Gene ID	8732
SwissProt ID	O60942
Immunogen	Recombinant protein of human HCE

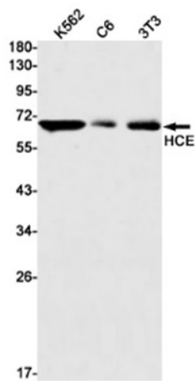
Background

Bifunctional mRNA-capping enzyme exhibiting RNA 5'-triphosphatase activity in the N-terminal part and mRNA guanylyltransferase activity in the C-terminal part. Catalyzes the first two steps of cap formation: by removing the gamma-

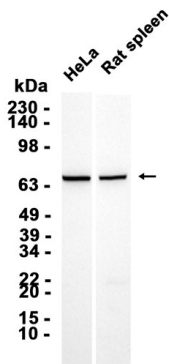
phosphate from the 5'-triphosphate end of nascent mRNA to yield a diphosphate end, and by transferring the gmp moiety of GTP to the 5'-diphosphate terminus.

Research Area

Image Data



Western blot detection of HCE in K562,C6,3T3 cell lysates using HCE antibody(1:1000 diluted).



Western blot analysis of extracts from HeLa cells and Rat spleen tissue using AMRe87277 at 1:1000.