

---

**Product Name: AFG2 Rabbit Monoclonal Antibody****Catalog #: AMRe87276**

For research use only.

**Summary**

<b>Description</b>	Recombinant rabbit monoclonal antibody
<b>Host</b>	Rabbit
<b>Application</b>	WB,FC
<b>Reactivity</b>	Human
<b>Conjugation</b>	Unconjugated
<b>Modification</b>	Unmodified
<b>Isotype</b>	IgG
<b>Clonality</b>	Monoclonal
<b>Form</b>	Liquid
<b>Concentration</b>	
<b>Storage</b>	Aliquot and store at -20°C (valid for 12 months). Avoid freeze/thaw cycles.
<b>Shipping</b>	Ice bags
<b>Buffer</b>	Supplied in 50mM Tris-Glycine(pH 7.4), 0.15M NaCl, 40% Glycerol, 0.01% sodium azide and 0.05% protective protein. Stable for 12 months from date of receipt.
<b>Purification</b>	Affinity Purification

**Application**

<b>Dilution Ratio</b>	WB 1:1000-1:5000,FC 1:50-1:100
<b>Molecular Weight</b>	Calculated MW:98 kDa; Observed MW:98 kDa

**Antigen Information**

<b>Gene Name</b>	AFG2
<b>Alternative Names</b>	AFG2; SPAF; EHLMRS
<b>Gene ID</b>	166378
<b>SwissProt ID</b>	Q8NB90
<b>Immunogen</b>	Recombinant protein of human AFG2

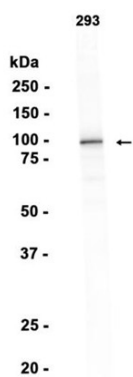
**Background**

This gene encodes a member of the ATPase associated with diverse activities family, whose members are defined by a highly conserved ATPase domain. Members of this family participate in diverse cellular processes that include membrane fusion, DNA

replication, microtubule severing, and protein degradation. The protein encoded by this gene has a putative mitochondrial targeting sequence and has been proposed to function in maintenance of mitochondrial function and integrity during mouse spermatogenesis. Allelic variants in this gene have been associated with epilepsy, hearing loss, and cognitive disability syndrome. Alternative splicing results in multiple transcript variants. [provided by RefSeq, Sep 2016]

## Research Area

## Image Data



Western blot analysis of extracts from 293 cells using AFG2 Rabbit Monoclonal Antibody at 1:1000.