

**Product Name: SFRP1 Rabbit Monoclonal Antibody****Catalog #: AMRe87274**

For research use only.

**Summary**

<b>Description</b>	Recombinant rabbit monoclonal antibody
<b>Host</b>	Rabbit
<b>Application</b>	WB,FC,IP
<b>Reactivity</b>	Human,Mouse,Rat
<b>Conjugation</b>	Unconjugated
<b>Modification</b>	Unmodified
<b>Isotype</b>	IgG
<b>Clonality</b>	Monoclonal
<b>Form</b>	Liquid
<b>Concentration</b>	
<b>Storage</b>	Aliquot and store at -20°C (valid for 12 months). Avoid freeze/thaw cycles.
<b>Shipping</b>	Ice bags
<b>Buffer</b>	Supplied in 50mM Tris-Glycine(pH 7.4), 0.15M NaCl, 40% Glycerol, 0.01% sodium azide and 0.05% protective protein. Stable for 12 months from date of receipt.
<b>Purification</b>	Affinity Purification

**Application**

<b>Dilution Ratio</b>	WB 1:500-1:2000,FC 1:200-1:500,IP 1:20-1:50
<b>Molecular Weight</b>	Calculated MW:35 kDa; Observed MW:35 kDa

**Antigen Information**

<b>Gene Name</b>	SFRP1
<b>Alternative Names</b>	FRP; FRP1; FrzA; FRP-1; SARP2
<b>Gene ID</b>	6422
<b>SwissProt ID</b>	Q8N474
<b>Immunogen</b>	Recombinant protein of human SFRP1

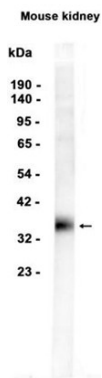
**Background**

This gene encodes a member of the SFRP family that contains a cysteine-rich domain homologous to the putative Wnt-binding site of Frizzled proteins. Members of this family act as soluble modulators of Wnt signaling; epigenetic silencing of SFRP genes

leads to deregulated activation of the Wnt-pathway which is associated with cancer. This gene may also be involved in determining the polarity of photoreceptor cells in the retina. [provided by RefSeq, Sep 2009]

## Research Area

## Image Data



Western blot analysis of extracts from Mouse kidney tissue using SFRP1 Rabbit Monoclonal Antibody at 1:1000.