

Product Name: SDHA Rabbit Monoclonal Antibody**Catalog #: AMRe87264**

For research use only.

Summary

Description	Recombinant rabbit monoclonal antibody
Host	Rabbit
Application	WB,IHC
Reactivity	Human,Mouse,Rat
Conjugation	Unconjugated
Modification	Unmodified
Isotype	IgG
Clonality	Monoclonal
Form	Liquid
Concentration	
Storage	Aliquot and store at -20°C (valid for 12 months). Avoid freeze/thaw cycles.
Shipping	Ice bags
Buffer	Supplied in 50mM Tris-Glycine(pH 7.4), 0.15M NaCl, 40% Glycerol, 0.01% sodium azide and 0.05% protective protein. Stable for 12 months from date of receipt.
Purification	Affinity Purification

Application

Dilution Ratio	WB 1:1000-1:5000,IHC 1:100-1:200
Molecular Weight	Calculated MW:73 kDa; Observed MW:73 kDa

Antigen Information

Gene Name	SDHA
Alternative Names	FP; PGL5; SDH1; SDH2; SDHF; CMD1GG
Gene ID	6389
SwissProt ID	P31040
Immunogen	A synthetic peptide of human SDHA

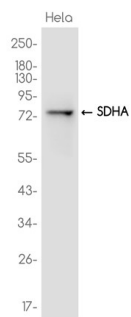
Background

This gene encodes a major catalytic subunit of succinate-ubiquinone oxidoreductase, a complex of the mitochondrial respiratory chain. The complex is composed of four nuclear-encoded subunits and is localized in the mitochondrial inner

membrane. Mutations in this gene have been associated with a form of mitochondrial respiratory chain deficiency known as Leigh Syndrome. A pseudogene has been identified on chromosome 3q29. Alternatively spliced transcript variants encoding different isoforms have been found for this gene. [provided by RefSeq, Jun 2014]

Research Area

Image Data



Western blot analysis of extracts from HeLa cells using SDHA Rabbit Monoclonal Antibody at 1:1000.