
Product Name: Cytokeratin 6 Rabbit Monoclonal Antibody**Catalog #: AMRe87257**

For research use only.

Summary

| | |
|----------------------|--|
| Description | Recombinant rabbit monoclonal antibody |
| Host | Rabbit |
| Application | WB,IHC,ICC/IF |
| Reactivity | Human |
| Conjugation | Unconjugated |
| Modification | Unmodified |
| Isotype | IgG |
| Clonality | Monoclonal |
| Form | Liquid |
| Concentration | |
| Storage | Aliquot and store at -20°C (valid for 12 months). Avoid freeze/thaw cycles. |
| Shipping | Ice bags |
| Buffer | Supplied in 50mM Tris-Glycine(pH 7.4), 0.15M NaCl, 40% Glycerol, 0.01% sodium azide and 0.05% protective protein. Stable for 12 months from date of receipt. |
| Purification | Affinity Purification |

Application

| | |
|-------------------------|---|
| Dilution Ratio | WB 1:500-1:2000,IHC 1:50-1:100,ICC/IF 1:20-1:50 |
| Molecular Weight | Calculated MW:60 kDa; Observed MW:60 kDa |

Antigen Information

| | |
|--------------------------|--|
| Gene Name | Cytokeratin 6 |
| Alternative Names | K6E; KRT6E; PPKNEFD |
| Gene ID | 286887 |
| SwissProt ID | P02538 |
| Immunogen | A synthetic peptide of human Cytokeratin 6 |

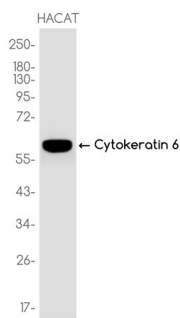
Background

Keratins are intermediate filament proteins responsible for the structural integrity of epithelial cells and are subdivided into epithelial keratins and hair keratins. The type II keratins are clustered in a region of chromosome 12q13. [provided by RefSeq,

Jul 2009]

Research Area

Image Data



Western blot analysis of extracts from HACAT cells using Cytokeratin 6 Rabbit Monoclonal Antibody at 1:1000.