

Product Name: SERPING1 Rabbit Monoclonal Antibody**Catalog #: AMRe87253**

For research use only.

Summary

Description	Recombinant rabbit monoclonal antibody
Host	Rabbit
Application	WB
Reactivity	Human
Conjugation	Unconjugated
Modification	Unmodified
Isotype	IgG
Clonality	Monoclonal
Form	Liquid
Concentration	
Storage	Aliquot and store at -20°C (valid for 12 months). Avoid freeze/thaw cycles.
Shipping	Ice bags
Buffer	Supplied in 50mM Tris-Glycine(pH 7.4), 0.15M NaCl, 40% Glycerol, 0.01% sodium azide and 0.05% protective protein. Stable for 12 months from date of receipt.
Purification	Affinity Purification

Application

Dilution Ratio	WB 1:1000-1:5000
Molecular Weight	Calculated MW:55 kDa; Observed MW:100 kDa

Antigen Information

Gene Name	SERPING1
Alternative Names	C1IN; C1NH; HAE1; HAE2; C1INH
Gene ID	710
SwissProt ID	P05155
Immunogen	A synthetic peptide of human SERPING1

Background

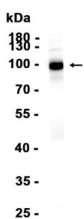
This gene encodes a highly glycosylated plasma protein involved in the regulation of the complement cascade. Its encoded protein, C1 inhibitor, inhibits activated C1r and C1s of the first complement component and thus regulates complement

activation. It is synthesized in the liver, and its deficiency is associated with hereditary angioneurotic oedema (HANE). Alternative splicing results in multiple transcript variants encoding the same isoform. [provided by RefSeq, May 2020]

Research Area

Image Data

Human plasma



Western blot analysis of extracts from Human plasma tissue using SERPING1 Rabbit Monoclonal Antibody at 1:1000.