

---

**Product Name: ZNF160 Rabbit Monoclonal Antibody****Catalog #: AMRe87252**

For research use only.

**Summary**

<b>Description</b>	Recombinant rabbit monoclonal antibody
<b>Host</b>	Rabbit
<b>Application</b>	WB,FC,IP
<b>Reactivity</b>	Human,Mouse,Rat
<b>Conjugation</b>	Unconjugated
<b>Modification</b>	Unmodified
<b>Isotype</b>	IgG
<b>Clonality</b>	Monoclonal
<b>Form</b>	Liquid
<b>Concentration</b>	
<b>Storage</b>	Aliquot and store at -20°C (valid for 12 months). Avoid freeze/thaw cycles.
<b>Shipping</b>	Ice bags
<b>Buffer</b>	Supplied in 50mM Tris-Glycine(pH 7.4), 0.15M NaCl, 40% Glycerol, 0.01% sodium azide and 0.05% protective protein. Stable for 12 months from date of receipt.
<b>Purification</b>	Affinity Purification

**Application**

<b>Dilution Ratio</b>	WB 1:1000-1:5000,FC 1:10-1:100,IP 1:10-1:100
<b>Molecular Weight</b>	Calculated MW:94 kDa; Observed MW:74 kDa

**Antigen Information**

<b>Gene Name</b>	ZNF160
<b>Alternative Names</b>	F11; HZF5; KR18; HKr18
<b>Gene ID</b>	90338
<b>SwissProt ID</b>	Q9HCG1
<b>Immunogen</b>	Recombinant protein of human ZNF160

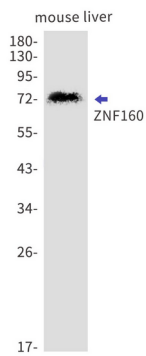
**Background**

The protein encoded by this gene is a Kruppel-related zinc finger protein which is characterized by the presence of an N-terminal repressor domain, the Kruppel-associated box (KRAB). The KRAB domain is a potent repressor of transcription; thus

this protein may function in transcription regulation. Multiple transcript variants have been found for this gene. [provided by RefSeq, Apr 2016]

## Research Area

## Image Data



Western blot detection of ZNF160 in mouse liver cell lysates using ZNF160 antibody(1:1000 diluted).