
Product Name: Cathepsin S Rabbit Monoclonal Antibody**Catalog #: AMRe87251**

For research use only.

Summary

Description	Recombinant rabbit monoclonal antibody
Host	Rabbit
Application	WB,IHC
Reactivity	Human
Conjugation	Unconjugated
Modification	Unmodified
Isotype	IgG
Clonality	Monoclonal
Form	Liquid
Concentration	
Storage	Aliquot and store at -20°C (valid for 12 months). Avoid freeze/thaw cycles.
Shipping	Ice bags
Buffer	Supplied in 50mM Tris-Glycine(pH 7.4), 0.15M NaCl, 40% Glycerol, 0.01% sodium azide and 0.05% protective protein. Stable for 12 months from date of receipt.
Purification	Affinity Purification

Application

Dilution Ratio	WB 1:1000-1:5000,IHC 1:50-1:200
Molecular Weight	Calculated MW:38 kDa; Observed MW:25 kDa

Antigen Information

Gene Name	Cathepsin S
Alternative Names	CTSS
Gene ID	1520
SwissProt ID	P25774
Immunogen	A synthetic peptide of human Cathepsin S

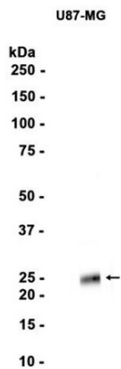
Background

The preproprotein encoded by this gene, a member of the peptidase C1 family, is a lysosomal cysteine proteinase that participates in the degradation of antigenic proteins to peptides for presentation on MHC class II molecules. The mature

protein cleaves the invariant chain of MHC class II molecules in endolysosomal compartments and enables the formation of antigen-MHC class II complexes and the proper display of extracellular antigenic peptides by MHC-II. The mature protein also functions as an elastase over a broad pH range. When secreted from cells, this protein can remodel components of the extracellular matrix such as elastin, collagen, and fibronectin. This gene is implicated in the pathology of many inflammatory and autoimmune diseases and, given its elastase activity, plays a significant role in some pulmonary diseases. Alternatively spliced transcript variants encoding distinct isoforms have been found for this gene. [provided by RefSeq, May 2020]

Research Area

Image Data



Western blot analysis of extracts from U87-MG cells using Cathepsin S Rabbit Monoclonal Antibody at 1:1000.