

Product Name: TIA1 Rabbit Monoclonal Antibody**Catalog #: AMRe87241**

For research use only.

Summary

Description	Recombinant rabbit monoclonal antibody
Host	Rabbit
Application	WB,IHC,ICC/IF,FC,IP
Reactivity	Human
Conjugation	Unconjugated
Modification	Unmodified
Isotype	IgG
Clonality	Monoclonal
Form	Liquid
Concentration	0.15mg/ml. The concentration of this product may be batch-dependent.
Storage	Aliquot and store at -20°C (valid for 12 months). Avoid freeze/thaw cycles.
Shipping	Ice bags
Buffer	Supplied in 50mM Tris-Glycine(pH 7.4), 0.15M NaCl, 40% Glycerol, 0.01% sodium azide and 0.05% protective protein. Stable for 12 months from date of receipt.
Purification	Affinity Purification

Application

Dilution Ratio	WB 1:500-1:2000,IHC 1:500-1:2000,ICC/IF 1:500-1:1000,FC 1:200-1:500,IP 1:20-1:50
Molecular Weight	Calculated MW:43 kDa; Observed MW:43 kDa

Antigen Information

Gene Name	TIA1
Alternative Names	WDM; TIA-1
Gene ID	7072
SwissProt ID	P31483
Immunogen	A synthetic peptide of human TIA1

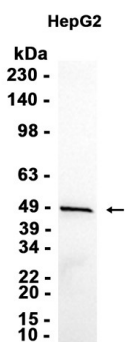
Background

The product encoded by this gene is a member of a RNA-binding protein family and possesses nucleolytic activity against cytotoxic lymphocyte (CTL) target cells. It has been suggested that this protein may be involved in the induction of apoptosis as

it preferentially recognizes poly(A) homopolymers and induces DNA fragmentation in CTL targets. The major granule-associated species is a 15-kDa protein that is thought to be derived from the carboxyl terminus of the 40-kDa product by proteolytic processing. Alternative splicing resulting in different isoforms has been found for this gene. [provided by RefSeq, May 2017]

Research Area

Image Data



Western blot analysis of extracts from HepG2 cells using TIA1 Rabbit Monoclonal Antibody at 1:1000.