

Summary

| | |
|------------------------|----------------------------------|
| Production Name | CD276 Rabbit Monoclonal Antibody |
| Description | Rabbit Monoclonal antibody |
| Host | Rabbit |
| Application | WB,ICC/IF,FC,IP |
| Reactivity | Human, Mouse |

Performance

| | |
|---------------------|--|
| Conjugation | Unconjugated |
| Modification | Unmodified |
| Isotype | IgG |
| Clonality | Monoclonal |
| Form | Liquid |
| Storage | Store at 4°C short term. Aliquot and store at -20°C long term. Avoid freeze/thaw cycles. |
| Buffer | Supplied in 50mM Tris-Glycine(pH 7.4), 0.15M NaCl, 40% Glycerol, 0.01% sodium azide and 0.05% protective protein. Stable for 12 months from date of receipt. |
| Purification | Affinity Purification |

Immunogen

| | |
|--------------------------|---------------------------------------|
| Gene Name | CD276 |
| Alternative Names | B7h3; B7RP-2; AU016588; 6030411F23Rik |
| Gene ID | 102657 |
| SwissProt ID | Q8VE98. |

Application

| | |
|-------------------------|--|
| Dilution Ratio | WB: 1:1000 ICC/IF: 1:1000 FC: 1:1000-1:5000 IP: 1:20-1:100 |
| Molecular Weight | Calculated MW:57 kDa; Observed MW:90-110 kDa |

Background

Modulates T-cell-mediated immune responses and the development of acute and chronic transplant rejection. Plays a

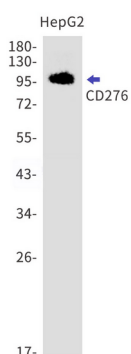
Product Name: CD276 Rabbit Monoclonal Antibody
Catalog #: AMRe87240



positive regulatory role in bone formation and has a dual role in the bone-immune interface. Induces antitumor immunity as it activates both acquired and innate immunity leading to natural killer cell and CD8 T-cell dependent killing of tumor cells.

Research Area

Image Data



Western blot detection of CD276 in HepG2 cell lysates using CD276 antibody(1:1000 diluted).

Note

For research use only.