

---

**Product Name: PITX3/PTX3 Rabbit Monoclonal Antibody****Catalog #: AMRe87235**

For research use only.

**Summary**

|                      |  |
|----------------------|--|
| <b>Description</b>   | Recombinant rabbit monoclonal antibody   |
| <b>Host</b>          | Rabbit   |
| <b>Application</b>   | WB,FC  |
| <b>Reactivity</b>    | Human,Mouse,Rat  |
| <b>Conjugation</b>   | Unconjugated   |
| <b>Modification</b>  | Unmodified   |
| <b>Isotype</b>       | IgG  |
| <b>Clonality</b>     | Monoclonal   |
| <b>Form</b>          | Liquid   |
| <b>Concentration</b> |  |
| <b>Storage</b>       | Aliquot and store at -20°C (valid for 12 months). Avoid freeze/thaw cycles.  |
| <b>Shipping</b>      | Ice bags   |
| <b>Buffer</b>        | Supplied in 50mM Tris-Glycine(pH 7.4), 0.15M NaCl, 40% Glycerol, 0.01% sodium azide and 0.05% protective protein. Stable for 12 months from date of receipt. |
| <b>Purification</b>  | Affinity Purification  |

**Application**

|                         |  |
|-------------------------|--|
| <b>Dilution Ratio</b>   | WB 1:1000-1:5000,FC 1:10-1:100           |
| <b>Molecular Weight</b> | Calculated MW:32 kDa; Observed MW:32 kDa |

**Antigen Information**

|                          |   |
|--------------------------|---|
| <b>Gene Name</b>         | PITX3/PTX3                              |
| <b>Alternative Names</b> | ASMD; ASOD; PTX3; ASGD1; CTPP4; CTRCT11 |
| <b>Gene ID</b>           | 5309                                    |
| <b>SwissProt ID</b>      | O75364                                  |
| <b>Immunogen</b>         | A synthetic peptide of human PITX3/PTX3 |

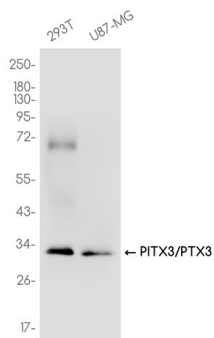
**Background**

This gene encodes a member of the RIEG/PITX homeobox family, which is in the bicoid class of homeodomain proteins. Members of this family act as transcription factors. This protein is involved in lens formation during eye development.

Mutations of this gene have been associated with anterior segment mesenchymal dysgenesis and congenital cataracts.  
[provided by RefSeq, Jul 2008]

## Research Area

## Image Data



Western blot analysis of extracts from 293T,U87-MG cells using PITX3/PTX3 Rabbit Monoclonal Antibody at 1:1000.