

---

**Product Name: MAG/GMA Rabbit Monoclonal Antibody****Catalog #: AMRe87229**

For research use only.

**Summary**

<b>Description</b>	Recombinant rabbit monoclonal antibody
<b>Host</b>	Rabbit
<b>Application</b>	WB
<b>Reactivity</b>	Human, Mouse, Rat
<b>Conjugation</b>	Unconjugated
<b>Modification</b>	Unmodified
<b>Isotype</b>	IgG
<b>Clonality</b>	Monoclonal
<b>Form</b>	Liquid
<b>Concentration</b>	
<b>Storage</b>	Aliquot and store at -20°C (valid for 12 months). Avoid freeze/thaw cycles.
<b>Shipping</b>	Ice bags
<b>Buffer</b>	Supplied in 50mM Tris-Glycine(pH 7.4), 0.15M NaCl, 40% Glycerol, 0.01% sodium azide and 0.05% protective protein. Stable for 12 months from date of receipt.
<b>Purification</b>	Affinity Purification

**Application**

<b>Dilution Ratio</b>	WB 1:1000-1:5000
<b>Molecular Weight</b>	Calculated MW:69 kDa; Observed MW:100 kDa

**Antigen Information**

<b>Gene Name</b>	MAG/GMA
<b>Alternative Names</b>	GMA; S-MAG; SPG75; SIGLEC4A; SIGLEC-4A
<b>Gene ID</b>	4099
<b>SwissProt ID</b>	P20916
<b>Immunogen</b>	A synthetic peptide of human MAG/GMA

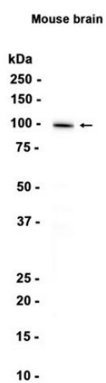
**Background**

The protein encoded by this gene is a type I membrane protein and member of the immunoglobulin superfamily. It is thought to be involved in the process of myelination. It is a lectin that binds to sialylated glycoconjugates and mediates certain myelin-

neuron cell-cell interactions. Three alternatively spliced transcripts encoding different isoforms have been described for this gene. [provided by RefSeq, Nov 2010]

## Research Area

## Image Data



Western blot analysis of extracts from Mouse brain tissue using MAG/GMA Rabbit Monoclonal Antibody at 1:1000.