
Product Name: RAB13 Rabbit Monoclonal Antibody**Catalog #: AMRe87222**

For research use only.

Summary

Description	Recombinant rabbit monoclonal antibody
Host	Rabbit
Application	WB
Reactivity	Human
Conjugation	Unconjugated
Modification	Unmodified
Isotype	IgG
Clonality	Monoclonal
Form	Liquid
Concentration	
Storage	Aliquot and store at -20°C (valid for 12 months). Avoid freeze/thaw cycles.
Shipping	Ice bags
Buffer	Supplied in 50mM Tris-Glycine(pH 7.4), 0.15M NaCl, 40% Glycerol, 0.01% sodium azide and 0.05% protective protein. Stable for 12 months from date of receipt.
Purification	Affinity Purification

Application

Dilution Ratio	WB 1:500-1:2000
Molecular Weight	Calculated MW:23 kDa; Observed MW:23 kDa

Antigen Information

Gene Name	RAB13
Alternative Names	GIG4
Gene ID	5872
SwissProt ID	P51153
Immunogen	A synthetic peptide of human RAB13

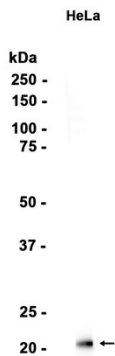
Background

This gene is a member of the Rab family of small G proteins and plays a role in regulating membrane trafficking between trans-Golgi network (TGN) and recycling endosomes (RE). The encoded protein is involved in the assembly of tight junctions, which

are components of the apical junctional complex (AJC) of epithelial cells. The AJC plays a role in forming a barrier between luminal contents and the underlying tissue. Additional functions associated with the protein include endocytic recycling of occludin, regulation of epithelial cell scattering, neuronal regeneration and regulation of neurite outgrowth. Alternately spliced transcript variants have been observed for this gene. A pseudogene associated with this gene is located on chromosome 12. [provided by RefSeq, Jan 2013]

Research Area

Image Data



Western blot analysis of extracts from HeLa cells using RAB13 Rabbit Monoclonal Antibody at 1:1000.



Western blot analysis of extracts from 293T cells using AMRe87222 at 1:1000.