
Product Name: PU.1/Spi1 Rabbit Monoclonal Antibody**Catalog #: AMRe87221**

For research use only.

Summary

Description	Recombinant rabbit monoclonal antibody
Host	Rabbit
Application	WB,IHC
Reactivity	Human
Conjugation	Unconjugated
Modification	Unmodified
Isotype	IgG
Clonality	Monoclonal
Form	Liquid
Concentration	0.15mg/ml. The concentration of this product may be batch-dependent.
Storage	Aliquot and store at -20°C (valid for 12 months). Avoid freeze/thaw cycles.
Shipping	Ice bags
Buffer	Supplied in 50mM Tris-Glycine(pH 7.4), 0.15M NaCl, 40% Glycerol, 0.01% sodium azide and 0.05% protective protein. Stable for 12 months from date of receipt.
Purification	Affinity Purification

Application

Dilution Ratio	WB 1:500-1:2000,IHC 1:500-1:2000
Molecular Weight	Calculated MW:31 kDa; Observed MW:42 kDa

Antigen Information

Gene Name	PU.1/Spi1
Alternative Names	OF; PU.1; SFPI1; SPI-1; SPI-A
Gene ID	6688
SwissProt ID	P17947
Immunogen	A synthetic peptide of human PU.1/Spi1

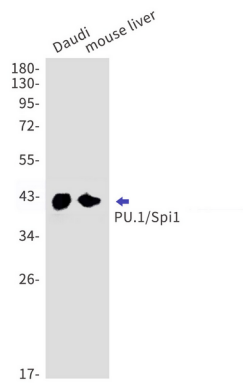
Background

This gene encodes an ETS-domain transcription factor that activates gene expression during myeloid and B-lymphoid cell development. The nuclear protein binds to a purine-rich sequence known as the PU-box found near the promoters of target

genes, and regulates their expression in coordination with other transcription factors and cofactors. The protein can also regulate alternative splicing of target genes. Multiple transcript variants encoding different isoforms have been found for this gene. [provided by RefSeq, Jul 2008]

Research Area

Image Data



Western blot detection of PU.1/Spi1 in Daudi , mouse liver cell lysates using PU.1/Spi1 antibody(1:1000 diluted).