

**Product Name: Endo G Rabbit Monoclonal Antibody****Catalog #: AMRe87218**

For research use only.

**Summary**

<b>Description</b>	Recombinant rabbit monoclonal antibody
<b>Host</b>	Rabbit
<b>Application</b>	WB
<b>Reactivity</b>	Human, Mouse, Rat
<b>Conjugation</b>	Unconjugated
<b>Modification</b>	Unmodified
<b>Isotype</b>	IgG
<b>Clonality</b>	Monoclonal
<b>Form</b>	Liquid
<b>Concentration</b>	
<b>Storage</b>	Aliquot and store at -20°C (valid for 12 months). Avoid freeze/thaw cycles.
<b>Shipping</b>	Ice bags
<b>Buffer</b>	Supplied in 50mM Tris-Glycine(pH 7.4), 0.15M NaCl, 40% Glycerol, 0.01% sodium azide and 0.05% protective protein. Stable for 12 months from date of receipt.
<b>Purification</b>	Affinity Purification

**Application**

<b>Dilution Ratio</b>	WB 1:1000-1:5000
<b>Molecular Weight</b>	Calculated MW:33 kDa; Observed MW:33 kDa

**Antigen Information**

<b>Gene Name</b>	Endo G
<b>Alternative Names</b>	ENDOG; Endonuclease G
<b>Gene ID</b>	2021
<b>SwissProt ID</b>	Q14249
<b>Immunogen</b>	A synthetic peptide of human Endo G

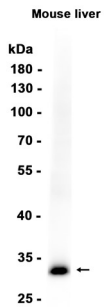
**Background**

The protein encoded by this gene is a nuclear encoded endonuclease that is localized in the mitochondrion. The encoded protein is widely distributed among animals and cleaves DNA at GC tracts. This protein is capable of generating the RNA

primers required by DNA polymerase gamma to initiate replication of mitochondrial DNA. [provided by RefSeq, Jul 2008]

## Research Area

## Image Data



Western blot analysis of extracts from Mouse liver tissue using Endo G Rabbit Monoclonal Antibody at 1:1000.