

---

**Product Name: Oligodendrocyte Specific Protein Rabbit Monoclonal Antibody****Catalog #: AMRe87217**

For research use only.

**Summary**

<b>Description</b>	Recombinant rabbit monoclonal antibody
<b>Host</b>	Rabbit
<b>Application</b>	WB,FC
<b>Reactivity</b>	Human,Mouse,Rat
<b>Conjugation</b>	Unconjugated
<b>Modification</b>	Unmodified
<b>Isotype</b>	IgG
<b>Clonality</b>	Monoclonal
<b>Form</b>	Liquid
<b>Concentration</b>	
<b>Storage</b>	Aliquot and store at -20°C (valid for 12 months). Avoid freeze/thaw cycles.
<b>Shipping</b>	Ice bags
<b>Buffer</b>	Supplied in 50mM Tris-Glycine(pH 7.4), 0.15M NaCl, 40% Glycerol, 0.01% sodium azide and 0.05% protective protein. Stable for 12 months from date of receipt.
<b>Purification</b>	Affinity Purification

**Application**

<b>Dilution Ratio</b>	WB 1:1000-1:5000,FC 1:100-1:500
<b>Molecular Weight</b>	Calculated MW:22 kDa; Observed MW:22 kDa

**Antigen Information**

<b>Gene Name</b>	Oligodendrocyte Specific Protein
<b>Alternative Names</b>	OSP; OTM
<b>Gene ID</b>	5010
<b>SwissProt ID</b>	O75508
<b>Immunogen</b>	A synthetic peptide of human Oligodendrocyte Specific Protein

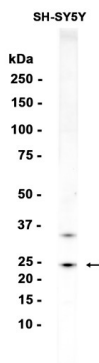
**Background**

This gene encodes a member of the claudin family. Claudins are integral membrane proteins and components of tight junction strands. Tight junction strands serve as a physical barrier to prevent solutes and water from passing freely through the

paracellular space between epithelial or endothelial cell sheets, and also play critical roles in maintaining cell polarity and signal transductions. The protein encoded by this gene is a major component of central nervous system (CNS) myelin and plays an important role in regulating proliferation and migration of oligodendrocytes. Mouse studies showed that the gene deficiency results in deafness and loss of the Sertoli cell epithelial phenotype in the testis. This protein is a tight junction protein at the human blood-testis barrier (BTB), and the BTB disruption is related to a dysfunction of this gene. Alternatively spliced transcript variants encoding different isoforms have been identified.[provided by RefSeq, Aug 2010]

## Research Area

## Image Data



Western blot analysis of extracts from SH-SY5Y cells using Oligodendrocyte Specific Protein Rabbit Monoclonal Antibody at 1:1000.