
Product Name: Claudin 3 Rabbit Monoclonal Antibody**Catalog #: AMRe87212**

For research use only.

Summary

Description	Recombinant rabbit monoclonal antibody
Host	Rabbit
Application	WB,IHC,ICC/IF,FC,IP
Reactivity	Human
Conjugation	Unconjugated
Modification	Unmodified
Isotype	IgG
Clonality	Monoclonal
Form	Liquid
Concentration	
Storage	Aliquot and store at -20°C (valid for 12 months). Avoid freeze/thaw cycles.
Shipping	Ice bags
Buffer	Supplied in 50mM Tris-Glycine(pH 7.4), 0.15M NaCl, 40% Glycerol, 0.01% sodium azide and 0.05% protective protein. Stable for 12 months from date of receipt.
Purification	Affinity Purification

Application

Dilution Ratio	WB 1:500-1:2000,IHC 1:100-1:200,ICC/IF 1:100-1:200,FC 1:20-1:50,IP 1:20-1:50
Molecular Weight	Calculated MW:23 kDa; Observed MW:20 kDa

Antigen Information

Gene Name	Claudin 3
Alternative Names	RVP1; HRVP1; C7orf1; CPE-R2; CPETR2
Gene ID	1365
SwissProt ID	O15551
Immunogen	A synthetic peptide of human Claudin 3

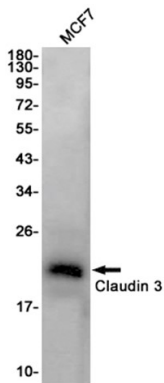
Background

Tight junctions represent one mode of cell-to-cell adhesion in epithelial or endothelial cell sheets, forming continuous seals around cells and serving as a physical barrier to prevent solutes and water from passing freely through the paracellular space.

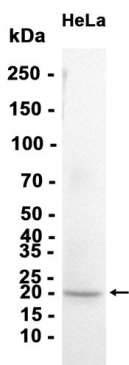
These junctions are comprised of sets of continuous networking strands in the outwardly facing cytoplasmic leaflet, with complementary grooves in the inwardly facing extracytoplasmic leaflet. The protein encoded by this intronless gene, a member of the claudin family, is an integral membrane protein and a component of tight junction strands. It is also a low-affinity receptor for *Clostridium perfringens* enterotoxin, and shares aa sequence similarity with a putative apoptosis-related protein found in rat. [provided by RefSeq, Jul 2008]

Research Area

Image Data



Western blot detection of Claudin 3 in MCF7 cell lysates using Claudin 3 antibody(1:1000 diluted).



Western blot analysis of extracts from HeLa cells using AMRe87212 at 1:1000.