

**Product Name:** gamma Sarcoglycan Rabbit Monoclonal Antibody**Catalog #:** AMRe87210

For research use only.

**Summary**

<b>Description</b>	Recombinant rabbit monoclonal antibody
<b>Host</b>	Rabbit
<b>Application</b>	WB,IHC,IP
<b>Reactivity</b>	Human,Mouse
<b>Conjugation</b>	Unconjugated
<b>Modification</b>	Unmodified
<b>Isotype</b>	IgG
<b>Clonality</b>	Monoclonal
<b>Form</b>	Liquid
<b>Concentration</b>	
<b>Storage</b>	Aliquot and store at -20°C (valid for 12 months). Avoid freeze/thaw cycles.
<b>Shipping</b>	Ice bags
<b>Buffer</b>	Supplied in 50mM Tris-Glycine(pH 7.4), 0.15M NaCl, 40% Glycerol, 0.01% sodium azide and 0.05% protective protein. Stable for 12 months from date of receipt.
<b>Purification</b>	Affinity Purification

**Application**

<b>Dilution Ratio</b>	WB 1:500-1:2000,IHC 1:200-1:500,IP 1:20-1:50
<b>Molecular Weight</b>	Calculated MW:32 kDa; Observed MW:32 kDa

**Antigen Information**

<b>Gene Name</b>	gamma Sarcoglycan
<b>Alternative Names</b>	A4; MAM; DMDA; SCG3; 35DAG; DAGA4; DMDA1; LGMD2C; LGMDR5; SCARMD2; gamma-SG
<b>Gene ID</b>	6445
<b>SwissProt ID</b>	Q13326
<b>Immunogen</b>	Recombinant protein of human gamma Sarcoglycan

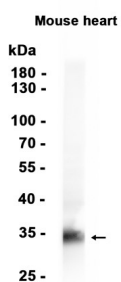
**Background**

This gene encodes gamma-sarcoglycan, one of several sarcolemmal transmembrane glycoproteins that interact with

dystrophin. The dystrophin-glycoprotein complex (DGC) spans the sarcolemma and is comprised of dystrophin, syntrophin, alpha- and beta-dystroglycans and sarcoglycans. The DGC provides a structural link between the subsarcolemmal cytoskeleton and the extracellular matrix of muscle cells. Defects in the encoded protein can lead to early onset autosomal recessive muscular dystrophy, in particular limb-girdle muscular dystrophy, type 2C (LGMD2C). [provided by RefSeq, Oct 2008]

## Research Area

## Image Data



Western blot analysis of extracts from Mouse heart tissue using gamma Sarcoglycan Rabbit Monoclonal Antibody at 1:1000.