
Product Name: ALS2CR8 Rabbit Monoclonal Antibody**Catalog #: AMRe87208**

For research use only.

Summary

Description	Recombinant rabbit monoclonal antibody
Host	Rabbit
Application	WB,FC
Reactivity	Human
Conjugation	Unconjugated
Modification	Unmodified
Isotype	IgG
Clonality	Monoclonal
Form	Liquid
Concentration	
Storage	Aliquot and store at -20°C (valid for 12 months). Avoid freeze/thaw cycles.
Shipping	Ice bags
Buffer	Supplied in 50mM Tris-Glycine(pH 7.4), 0.15M NaCl, 40% Glycerol, 0.01% sodium azide and 0.05% protective protein. Stable for 12 months from date of receipt.
Purification	Affinity Purification

Application

Dilution Ratio	WB 1:1000-1:5000,FC 1:50-1:100
Molecular Weight	Calculated MW:81 kDa; Observed MW:81 kDa

Antigen Information

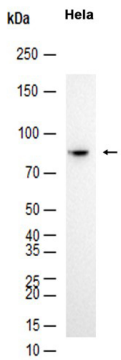
Gene Name	ALS2CR8
Alternative Names	ALS2CR8; NYD-SP24
Gene ID	79800
SwissProt ID	Q8N187
Immunogen	Recombinant protein of human ALS2CR8

Background

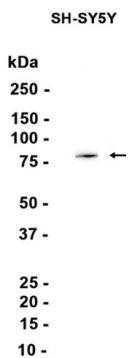
Acts as a transcriptional activator that mediates the calcium- and neuron-selective induction of BDNF exon III transcription. Binds to the consensus calcium-response element CaRE1 5'-CTATTTCGAG-3' sequence.

Research Area

Image Data



Western blot analysis of extracts from HeLa cells using ALS2CR8 Rabbit Monoclonal Antibody at 1:3000.



Western blot analysis of extracts from SH-SY5Y cells using AMRe87208 at 1:3000.