

**Product Name: LSP1 Rabbit Monoclonal Antibody****Catalog #: AMRe87204**

For research use only.

**Summary**

<b>Description</b>	Recombinant rabbit monoclonal antibody
<b>Host</b>	Rabbit
<b>Application</b>	WB,IHC
<b>Reactivity</b>	Human
<b>Conjugation</b>	Unconjugated
<b>Modification</b>	Unmodified
<b>Isotype</b>	IgG
<b>Clonality</b>	Monoclonal
<b>Form</b>	Liquid
<b>Concentration</b>	
<b>Storage</b>	Aliquot and store at -20°C (valid for 12 months). Avoid freeze/thaw cycles.
<b>Shipping</b>	Ice bags
<b>Buffer</b>	Supplied in 50mM Tris-Glycine(pH 7.4), 0.15M NaCl, 40% Glycerol, 0.01% sodium azide and 0.05% protective protein. Stable for 12 months from date of receipt.
<b>Purification</b>	Affinity Purification

**Application**

<b>Dilution Ratio</b>	WB 1:1000-1:5000,IHC 1:100-1:200
<b>Molecular Weight</b>	Calculated MW:37 kDa; Observed MW:52 kDa

**Antigen Information**

<b>Gene Name</b>	LSP1
<b>Alternative Names</b>	WP34; pp52
<b>Gene ID</b>	4046
<b>SwissProt ID</b>	P33241
<b>Immunogen</b>	A synthetic peptide of human LSP1

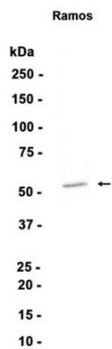
**Background**

This gene encodes an intracellular F-actin binding protein. The protein is expressed in lymphocytes, neutrophils, macrophages, and endothelium and may regulate neutrophil motility, adhesion to fibrinogen matrix proteins, and transendothelial migration.

Alternative splicing results in multiple transcript variants encoding different isoforms. [provided by RefSeq, Jul 2008]

## Research Area

## Image Data



Western blot analysis of extracts from Ramos cells using LSP1 Rabbit Monoclonal Antibody at 1:1000.