
Product Name: alpha Actinin/ACTN1 Rabbit Monoclonal Antibody**Catalog #:** AMRe87199

For research use only.

Summary

Description	Recombinant rabbit monoclonal antibody
Host	Rabbit
Application	WB
Reactivity	Human, Mouse, Rat
Conjugation	Unconjugated
Modification	Unmodified
Isotype	IgG
Clonality	Monoclonal
Form	Liquid
Concentration	
Storage	Aliquot and store at -20°C (valid for 12 months). Avoid freeze/thaw cycles.
Shipping	Ice bags
Buffer	Supplied in 50mM Tris-Glycine(pH 7.4), 0.15M NaCl, 40% Glycerol, 0.01% sodium azide and 0.05% protective protein. Stable for 12 months from date of receipt.
Purification	Affinity Purification

Application

Dilution Ratio	WB 1:500-1:2000
Molecular Weight	Calculated MW:103 kDa; Observed MW:103 kDa

Antigen Information

Gene Name	alpha Actinin/ACTN1
Alternative Names	BDPLT15
Gene ID	87
SwissProt ID	P12814
Immunogen	A synthetic peptide of human alpha Actinin/ACTN1

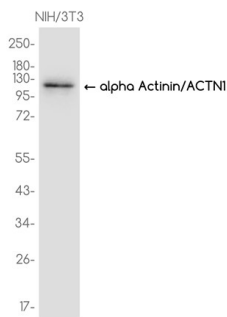
Background

Alpha actinins belong to the spectrin gene superfamily which represents a diverse group of cytoskeletal proteins, including the alpha and beta spectrins and dystrophins. Alpha actinin is an actin-binding protein with multiple roles in different cell types. In

nonmuscle cells, the cytoskeletal isoform is found along microfilament bundles and adherens-type junctions, where it is involved in binding actin to the membrane. In contrast, skeletal, cardiac, and smooth muscle isoforms are localized to the Z-disc and analogous dense bodies, where they help anchor the myofibrillar actin filaments. This gene encodes a nonmuscle, cytoskeletal, alpha actinin isoform and maps to the same site as the structurally similar erythroid beta spectrin gene. Three transcript variants encoding different isoforms have been found for this gene. [provided by RefSeq, Jul 2008]

Research Area

Image Data



Western blot analysis of extracts from 3T3 cells using alpha Actinin/ACTN1 Rabbit Monoclonal Antibody at 1:1000.