

Product Name: GAB2 Rabbit Monoclonal Antibody**Catalog #: AMRe87198**

For research use only.

Summary

Description	Recombinant rabbit monoclonal antibody
Host	Rabbit
Application	WB
Reactivity	Human, Mouse, Rat
Conjugation	Unconjugated
Modification	Unmodified
Isotype	IgG
Clonality	Monoclonal
Form	Liquid
Concentration	
Storage	Aliquot and store at -20°C (valid for 12 months). Avoid freeze/thaw cycles.
Shipping	Ice bags
Buffer	Supplied in 50mM Tris-Glycine(pH 7.4), 0.15M NaCl, 40% Glycerol, 0.01% sodium azide and 0.05% protective protein. Stable for 12 months from date of receipt.
Purification	Affinity Purification

Application

Dilution Ratio	WB 1:500-1:2000
Molecular Weight	Calculated MW:75 kDa; Observed MW:98 kDa

Antigen Information

Gene Name	GAB2
Alternative Names	KIAA0571; GRB2-associated-binding protein 2; GRB2-associated binder 2; Growth factor receptor bound protein 2-associated protein 2; pp100
Gene ID	9846
SwissProt ID	Q9UQC2
Immunogen	A synthetic peptide of human GAB2

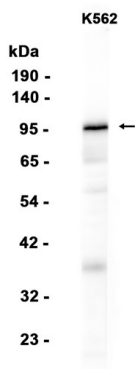
Background

This gene is a member of the GRB2-associated binding protein (GAB) gene family. These proteins contain pleckstrin homology

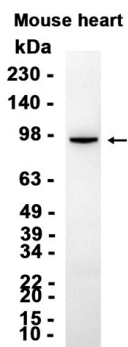
(PH) domain, and bind SHP2 tyrosine phosphatase and GRB2 adapter protein. They act as adapters for transmitting various signals in response to stimuli through cytokine and growth factor receptors, and T- and B-cell antigen receptors. The protein encoded by this gene is the principal activator of phosphatidylinositol-3 kinase in response to activation of the high affinity IgE receptor. Two alternatively spliced transcripts encoding different isoforms have been described for this gene. [provided by RefSeq, Nov 2009]

Research Area

Image Data



Western blot analysis of extracts from K562 cells using GAB2 Rabbit Monoclonal Antibody at 1:1000.



Western blot analysis of extracts from Mouse heart tissue using AMRe87198 at 1:1000.