

---

**Product Name: SGK1 Rabbit Monoclonal Antibody****Catalog #: AMRe87196**

For research use only.

**Summary**

<b>Description</b>	Recombinant rabbit monoclonal antibody
<b>Host</b>	Rabbit
<b>Application</b>	WB,IHC,FC
<b>Reactivity</b>	Human,Mouse,Rat
<b>Conjugation</b>	Unconjugated
<b>Modification</b>	Unmodified
<b>Isotype</b>	IgG
<b>Clonality</b>	Monoclonal
<b>Form</b>	Liquid
<b>Concentration</b>	
<b>Storage</b>	Aliquot and store at -20°C (valid for 12 months). Avoid freeze/thaw cycles.
<b>Shipping</b>	Ice bags
<b>Buffer</b>	Supplied in 50mM Tris-Glycine(pH 7.4), 0.15M NaCl, 40% Glycerol, 0.01% sodium azide and 0.05% protective protein. Stable for 12 months from date of receipt.
<b>Purification</b>	Affinity Purification

**Application**

<b>Dilution Ratio</b>	WB 1:500-1:2000,IHC 1:50-1:100,FC 1:20-1:50
<b>Molecular Weight</b>	Calculated MW:49 kDa; Observed MW:49 kDa

**Antigen Information**

<b>Gene Name</b>	SGK1
<b>Alternative Names</b>	SGK
<b>Gene ID</b>	6446
<b>SwissProt ID</b>	O00141
<b>Immunogen</b>	A synthetic peptide of human SGK1

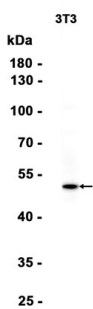
**Background**

This gene encodes a serine/threonine protein kinase that plays an important role in cellular stress response. This kinase activates certain potassium, sodium, and chloride channels, suggesting an involvement in the regulation of processes such as

cell survival, neuronal excitability, and renal sodium excretion. High levels of expression of this gene may contribute to conditions such as hypertension and diabetic nephropathy. Several alternatively spliced transcript variants encoding different isoforms have been noted for this gene. [provided by RefSeq, Jan 2009]

## Research Area

## Image Data



Western blot analysis of extracts from 3T3 cells using SGK1 Rabbit Monoclonal Antibody at 1:1000.