
Product Name: Ferritin Light Chain Rabbit Monoclonal Antibody**Catalog #: AMRe87180**

For research use only.

Summary

Description	Recombinant rabbit monoclonal antibody
Host	Rabbit
Application	WB,FC
Reactivity	Human,Mouse,Rat
Conjugation	Unconjugated
Modification	Unmodified
Isotype	IgG
Clonality	Monoclonal
Form	Liquid
Concentration	
Storage	Aliquot and store at -20°C (valid for 12 months). Avoid freeze/thaw cycles.
Shipping	Ice bags
Buffer	Supplied in 50mM Tris-Glycine(pH 7.4), 0.15M NaCl, 40% Glycerol, 0.01% sodium azide and 0.05% protective protein. Stable for 12 months from date of receipt.
Purification	Affinity Purification

Application

Dilution Ratio	WB 1:2000-1:20000,FC 1:100-1:500
Molecular Weight	Calculated MW:20 kDa; Observed MW:20 kDa

Antigen Information

Gene Name	Ferritin Light Chain
Alternative Names	LFTD; NBIA3
Gene ID	2512
SwissProt ID	P02792
Immunogen	A synthetic peptide of human Ferritin Light Chain

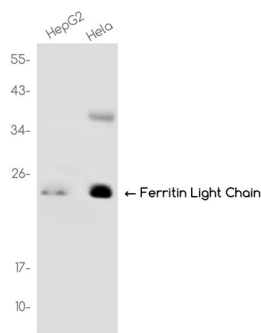
Background

This gene encodes the light subunit of the ferritin protein. Ferritin is the major intracellular iron storage protein in prokaryotes and eukaryotes. It is composed of 24 subunits of the heavy and light ferritin chains. Variation in ferritin subunit composition

may affect the rates of iron uptake and release in different tissues. A major function of ferritin is the storage of iron in a soluble and nontoxic state. Defects in this light chain ferritin gene are associated with several neurodegenerative diseases and hyperferritinemia-cataract syndrome. This gene has multiple pseudogenes. [provided by RefSeq, Jul 2008]

Research Area

Image Data



Western blot analysis of extracts from HeLa, HepG2 cells using Ferritin Light Chain Rabbit Monoclonal Antibody at 1:2000.