

Product Name: smooth muscle Myosin heavy chain 11 Rabbit Monoclonal Antibody
Catalog #: AMRe87178

For research use only.

Summary

Description	Recombinant rabbit monoclonal antibody
Host	Rabbit
Application	WB,IHC
Reactivity	Human,Mouse
Conjugation	Unconjugated
Modification	Unmodified
Isotype	IgG
Clonality	Monoclonal
Form	Liquid
Concentration	
Storage	Aliquot and store at -20°C (valid for 12 months). Avoid freeze/thaw cycles.
Shipping	Ice bags
Buffer	Supplied in 50mM Tris-Glycine(pH 7.4), 0.15M NaCl, 40% Glycerol, 0.01% sodium azide and 0.05% protective protein. Stable for 12 months from date of receipt.
Purification	Affinity Purification

Application

Dilution Ratio	WB 1:2000-1:20000,IHC 1:100-1:500
Molecular Weight	Calculated MW:227 kDa; Observed MW:255 kDa

Antigen Information

Gene Name	smooth muscle Myosin heavy chain 11
Alternative Names	AAT4; FAA4; SMHC; SMMHC
Gene ID	4629
SwissProt ID	P35749
Immunogen	A synthetic peptide of human smooth muscle Myosin heavy chain 11

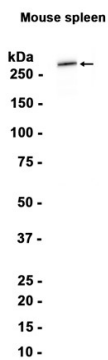
Background

The protein encoded by this gene is a smooth muscle myosin belonging to the myosin heavy chain family. The gene product is a subunit of a hexameric protein that consists of two heavy chain subunits and two pairs of non-identical light chain subunits. It

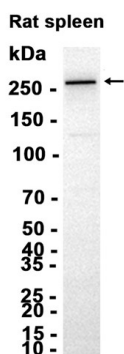
functions as a major contractile protein, converting chemical energy into mechanical energy through the hydrolysis of ATP. The gene encoding a human ortholog of rat NUDE1 is transcribed from the reverse strand of this gene, and its 3' end overlaps with that of the latter. The pericentric inversion of chromosome 16 [inv(16)(p13q22)] produces a chimeric transcript that encodes a protein consisting of the first 165 residues from the N terminus of core-binding factor beta in a fusion with the C-terminal portion of the smooth muscle myosin heavy chain. This chromosomal rearrangement is associated with acute myeloid leukemia of the M4Eo subtype. Alternative splicing generates isoforms that are differentially expressed, with ratios changing during muscle cell maturation. Alternatively spliced transcript variants encoding different isoforms have been identified. [provided by RefSeq, Jul 2008]

Research Area

Image Data



Western blot analysis of extracts from Mouse spleen tissue using smooth muscle Myosin heavy chain 11 Rabbit Monoclonal Antibody at 1:1000.



Western blot analysis of extracts from Rat spleen tissue using AMRe87178 at 1:5000.